



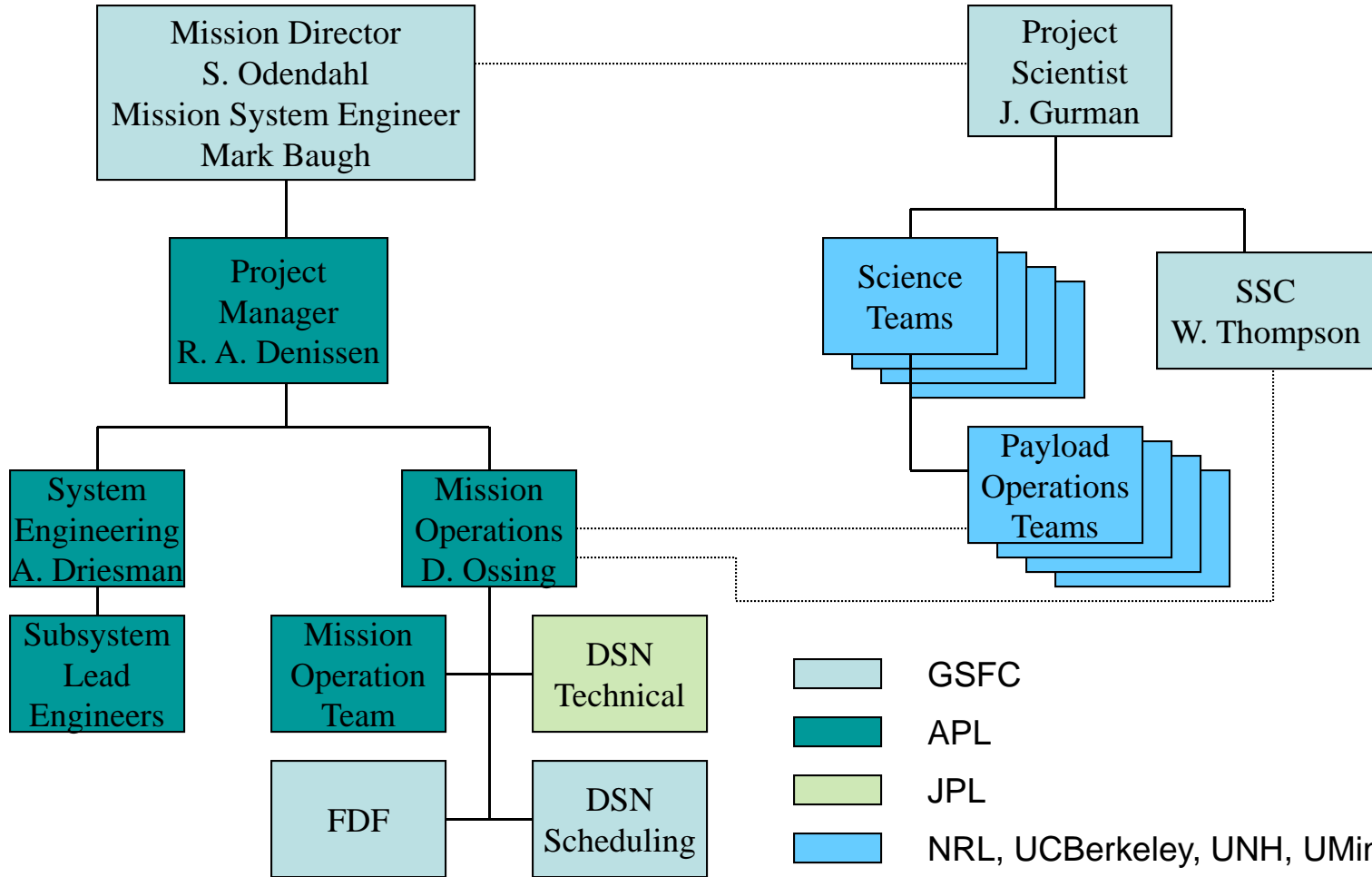
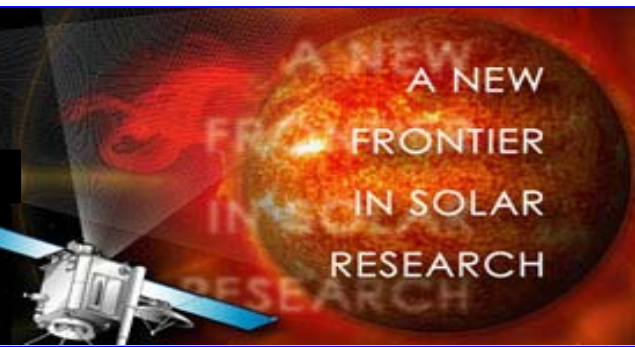
STEREO Project

Ron Denissen – APL Project Manager
Andy Driesman – APL Mission System Engineer



STEREO Phase E Organization Chart

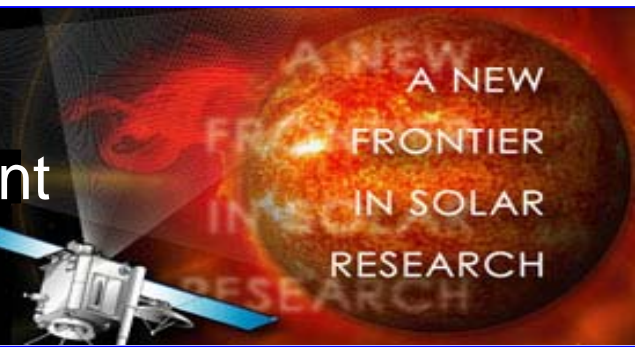
UNH • UCB • NRL • Obs. Paris • UMN • JHU/APL • NASA GSFC





Program Assessment

UNH • UCB • NRL • Obs. Paris • UMN • JHU/APL • NASA GSFC



Technical

Schedule

Programmatic

Nov	Dec	Jan
G	G	G

Nov	Dec	Jan
G	G	G

Nov	Dec	Jan
G	G	G

Nov	Dec	Jan
G	G	G

❖ Technical

- Both Observatories operational. Completed the prime science mission successfully and are now in our first extended mission.

❖ Schedule

- Routine operations – HGA and instrument cals, momentum dumps.

❖ Resources

- Extended mission proposal has been accepted and APL is under contract until the end of September 2010.

❖ Programmatic

- No issues at this time.

G No current problem
All commitments can be met

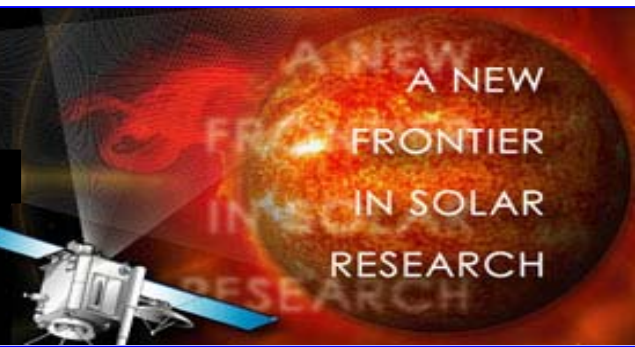
Y Major problem
Identified solution
Commitment is in jeopardy

R Major problem
No identified solution
Commitment cannot be met



Program Status

UNH • UCB • NRL • Obs. Paris • UMN • JHU/APL • NASA GSFC



❖ Mission Operations

- Operations team reduced 6
- 1 attended track per week on each observatory (more if requested)
- Collecting on Average over 6 Gbits/day

❖ Special Observatory Events

- *91 instrument calibration events*
- *20 High Gain Antenna Calibrations*
- *43 Momentum Dumps (~every 6 weeks on each spacecraft)*
- *Loaded new G&C Software*





Downlink Rates Chart

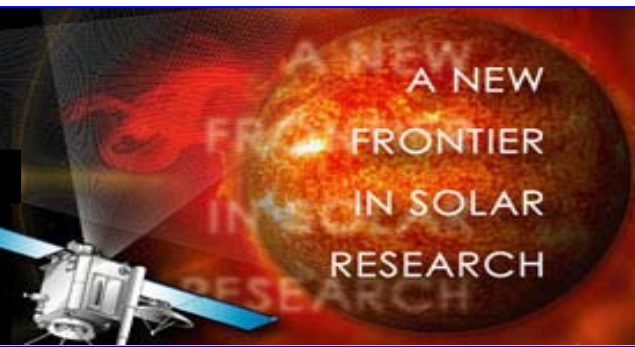
From STEREO Mission Events Schedule

	Spacecraft A	Spacecraft B
Begin 6 hour daily DSN tracks	10-Aug-2009	10-Aug-2009
Switch downlink rate to 360 kbps downlink rate	17-Aug-2009	8-Sept-2009
Begin 7 hour daily DSN tracks(when possible)	19-Apr-2010	30-Nov-2009
Switch downlink rate to 240 kbps downlink rate	26-Apr-2010	7-Dec-2009
Begin 8 hour daily DSN tracks (when possible)	13-Sept-2010	13-Sept-2010
Switch downlink rate to 160 kbps downlink rate	20-Sept-2010	20-Sept-2010



Program Summary

UNH • UCB • NRL • Obs. Paris • UMN • JHU/APL • NASA GSFC



- ❖ Began extended mission January 22nd, 2009
- ❖ The observatories are in operational mode and about 120 degrees apart.
- ❖ APL Team activities:
 - *Guidance interaction anomaly*
 - *SLE Telemetry testing*
 - *Internet Security*
 - *Other Spacecraft Emergencies (LCROSS, Messenger)*
- ❖ Continuing to collect science data, averaging about 6.5 Gbits/day.
- ❖ Supporting science team any way necessary.
 - Let us know how we can help
- ❖ **Yesterday was the 3 year anniversary of the launch of the STEREO spacecraft.**

