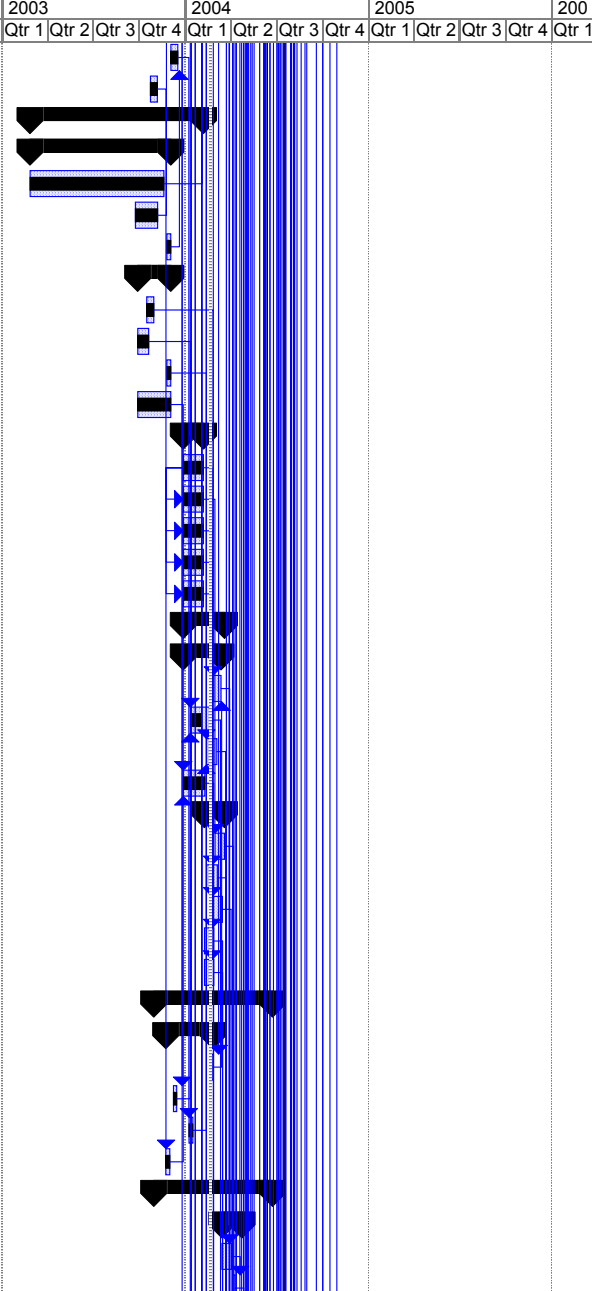


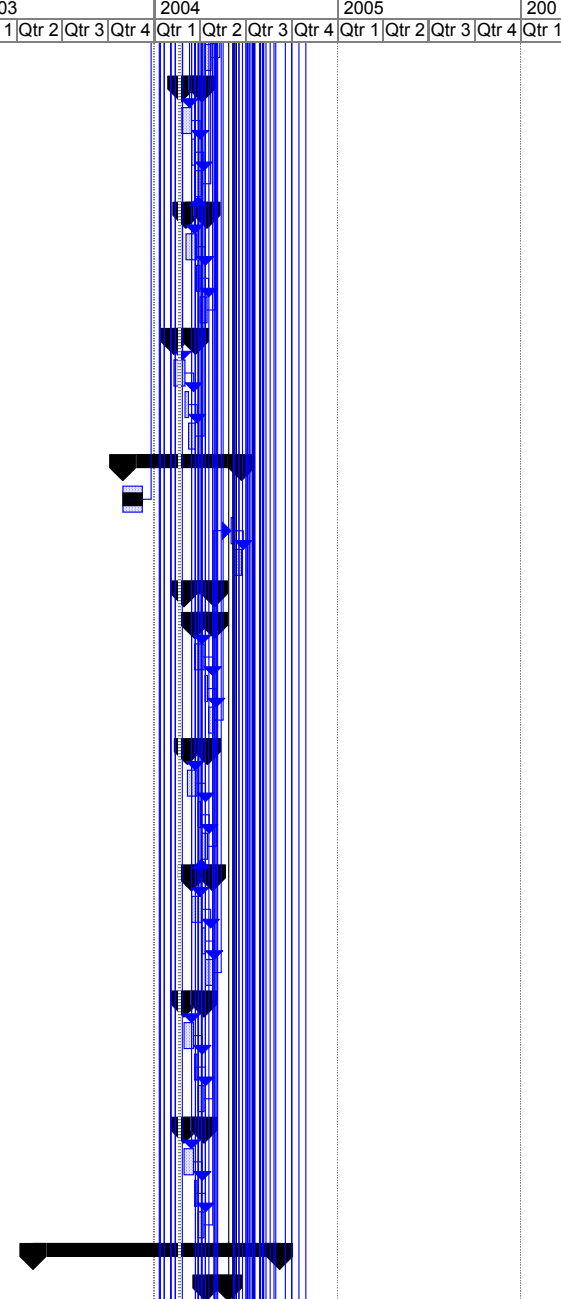
ID	Task Name	% Comp	Dur	Start	Finish	2003				2004				2005				200		
						Qtr 4	Qtr 1	Qtr 2	Qtr 3	Qtr 4	Qtr 1	Qtr 2	Qtr 3	Qtr 4	Qtr 1	Qtr 2	Qtr 3	Qtr 4	Qtr 1	
1	<b>IMPACT - Dave Curtis (UCB) &amp; Lil Reichenthal (GSFC)</b>	50%	698 d	2/26/03	11/18/05															
2	<b>Suite Deliveries to APL</b>	0%	51 d	8/13/04	10/28/04															
3	FM 1 Target Delivery Date	0%	0 d	10/7/04	10/7/04															
4	FM 1 Target Delivery Date	0%	0 d	10/28/04	10/28/04															
5	Boom Suite FM 1 Ready for Delivery to APL	0%	0 d	8/13/04	8/13/04															
6	Boom Suite FM 2 Ready for Delivery to APL	0%	0 d	9/28/04	9/28/04															
7	SEP Suite FM 1 Ready for Delivery to APL	0%	0 d	9/14/04	9/14/04															
8	SEP Suite FM 2 Ready for Delivery to APL	0%	0 d	10/12/04	10/12/04															
9	<b>Environmental Testing - PER, Impact Suite EMC, Snapshots of Boom &amp; SEP Sui</b>	1%	186 d	1/14/04	10/5/04															
10	<b>Reviews (PER and TRR's) - TRR Dates are Tentative</b>	25%	124 d	1/14/04	7/8/04															
11	Instrument PER at UCB	100%	1 d	1/14/04	1/14/04															
12	TRR 1 - Prior to FM 1 SEPT Thermal Vac	100%	1 d	2/13/04	2/13/04															
13	TRR 2 - Prior to FM 1 STE-U Thermal Vac/Thermal Balance	0%	1 d	3/25/04	3/25/04															
14	TRR 3 - Prior to FM 1 Boom Structure Vibration	0%	1 d	4/20/04	4/20/04															
15	TRR 4 - Prior to FM 1 IDPU Vibration	0%	1 d	4/26/04	4/26/04															
16	TRR 5 - Prior to FM 1 SWEA Vibration	0%	1 d	5/28/04	5/28/04															
17	TRR 6 - Prior to FM 1 Impact Suite EMC (for Boom and SEP)	0%	1 d	6/22/04	6/22/04															
18	TRR 7 - Prior to FM 1 SIT Vibration	0%	1 d	7/8/04	7/8/04															
19	IMPACT Suite FM 1 EMC Testing at UCB	0%	10 d	6/29/04	7/12/04															
20	<b>Boom Suite FM 1 Environmental Test Flow Snapshot - UCB</b>	0%	86 d	4/1/04	7/30/04															
21	STE-U Thermal Vac/Thermal Balance/Bake Out	0%	14 d	4/1/04	4/20/04															
22	Boom Structure Vibration	0%	4 d	4/27/04	4/30/04															
23	IDPU Vibration	0%	5 d	5/3/04	5/7/04															
24	Boom Structure Thermal Vac & Bake Out	0%	15 d	5/3/04	5/21/04															
25	IDPU Thermal Vac & Bake Out	0%	10 d	5/10/04	5/21/04															
26	SWEA/STE Vibration	0%	5 d	6/7/04	6/11/04															
27	SWEA/STE Thermal Vac/Thermal Balance/Bake Out	0%	14 d	7/13/04	7/30/04															
28	<b>Boom Suite FM 2 Environmental Test Flow Snapshot - UCB</b>	0%	99 d	4/27/04	9/14/04															
29	STE-U Thermal Vac/Bake Out	0%	10 d	4/27/04	5/10/04															
30	IDPU Vibration	0%	5 d	5/10/04	5/14/04															
31	Boom Structure Vibration	0%	4 d	5/17/04	5/20/04															
32	IDPU Thermal Vac & Bake Out	0%	10 d	5/17/04	5/28/04															
33	Boom Structure Thermal Vac & Bake Out	0%	15 d	5/24/04	6/14/04															
34	SWEA/STE Vibration	0%	5 d	8/9/04	8/13/04															
35	SWEA/STE Thermal Vac & Bake Out	0%	10 d	8/16/04	8/27/04															
36	Boom Suite FM 2 EMC	0%	5 d	9/8/04	9/14/04															
37	<b>SEP Suite FM 1 Environmental Test Flow Snapshot</b>	0%	149 d	2/17/04	9/14/04															
38	SEPT (NS & E) Vibration (in Europe)	0%	8 d	2/17/04	2/24/04															
39	SEPT (NS & E) Thermal Vac (in Europe)	0%	9 d	2/25/04	3/8/04															
40	SEPT (NS & E) Bake Out (in Europe)	0%	2 d	3/9/04	3/10/04															

ID	Task Name	% Comp	Dur	Start	Finish	2003				2004				2005				200	
						Qtr 4	Qtr 1	Qtr 2	Qtr 3	Qtr 4	Qtr 1	Qtr 2	Qtr 3	Qtr 4	Qtr 1	Qtr 2	Qtr 3	Qtr 4	Qtr 1
41	SEPT (NS & E) Thermal Balance (at GSFC)	0%	10 d	7/13/04	7/26/04														
42	LET/HET/SEP Cen Accelerator Test (at MSU)	0%	11 d	7/13/04	7/27/04														
43	SIT Vibe and Acoustics (at GSFC)	0%	10 d	7/15/04	7/28/04														
44	LET/HET/SEP Cen Vibe and Acoustics (at JPL)	0%	10 d	7/23/04	8/5/04														
45	SIT Thermal Balance (at GSFC)	0%	5 d	7/30/04	8/5/04														
46	LET/HET/SEP Cen Thermal Balance (at JPL)	0%	5 d	8/6/04	8/12/04														
47	SIT Thermal Vac (at GSFC)	0%	10 d	8/6/04	8/19/04														
48	LET/HET/SEP Cen Thermal Vac (at JPL)	0%	15 d	8/19/04	9/9/04														
49	SIT Bake Out (at GSFC)	0%	3 d	8/24/04	8/26/04														
50	LET/HET/SEP Cen Bake Out (at JPL)	0%	3 d	9/10/04	9/14/04														
51	<b>SEP Suite FM 2 Environmental Test Flow Snapshot</b>	<b>0%</b>	<b>164 d</b>	<b>2/17/04</b>	<b>10/5/04</b>														
52	SEPT (NS & E) Vibe and Acoustics (in Europe)	0%	8 d	2/17/04	2/24/04														
53	SEPT (NS & E) Thermal Vac (in Europe)	0%	9 d	3/9/04	3/17/04														
54	SEPT (NS & E) Bake Out (in Europe)	0%	2 d	3/18/04	3/19/04														
55	LET/HET/SEP Cen Accelerator Test (at MSU)	0%	11 d	7/13/04	7/27/04														
56	LET/HET/SEP Cen Vibe and Acoustics (at JPL)	0%	10 d	7/23/04	8/5/04														
57	SEP Suite FM 2 EMC (at Caltech)	0%	5 d	8/12/04	8/18/04														
58	LET/HET/SEP Cen Thermal Vac (at JPL)	0%	15 d	8/19/04	9/9/04														
59	SIT Vibe and Acoustics (at GSFC)	0%	10 d	8/23/04	9/3/04														
60	SIT Thermal Balance (at GSFC)	0%	5 d	9/8/04	9/14/04														
61	LET/HET/SEP Cen Bake Out (at JPL)	0%	3 d	9/10/04	9/14/04														
62	SIT Thermal Vac (at GSFC)	0%	10 d	9/15/04	9/28/04														
63	SIT Bake Out (at GSFC)	0%	3 d	10/1/04	10/5/04														
64	<b>Power Converters - UCB</b>	<b>57%</b>	<b>335 d</b>	<b>2/26/03</b>	<b>6/23/04</b>														
65	<b>Deliveries</b>	<b>20%</b>	<b>100 d</b>	<b>12/9/03</b>	<b>4/30/04</b>														
66	<b>FM 1</b>	<b>40%</b>	<b>95 d</b>	<b>12/9/03</b>	<b>4/23/04</b>														
67	Deliver IDPU FM 1 LVPS (stays at UCB)	0%	0 d	4/23/04	4/23/04														
68	Deliver SEP FM 1 LVPS (to Caltech)	0%	1 d	4/6/04	4/6/04														
69	Deliver SWEA/STE FM 1 LVPS (stays at UCB)	0%	0 d	4/15/04	4/15/04														
70	Deliver PLASTIC FM 1 LVPS (to UNH)	0%	2 d	3/24/04	3/25/04														
71	Deliver SIT FM 1 HVPS (to UMD)	100%	2 d	12/9/03	12/10/03														
72	<b>FM 2</b>	<b>0%</b>	<b>15 d</b>	<b>4/12/04</b>	<b>4/30/04</b>														
73	Deliver IDPU FM 2 LVPS (stays at UCB)	0%	0 d	4/30/04	4/30/04														
74	Deliver SEP FM 2 LVPS (to Caltech)	0%	1 d	4/19/04	4/19/04														
75	Deliver SWEA/STE FM 2 LVPS (stays at UCB)	0%	0 d	4/26/04	4/26/04														
76	Deliver PLASTIC FM 2 LVPS (to UNH)	0%	2 d	4/12/04	4/13/04														
77	Deliver SIT FM 2 HVPS (to UMD)	0%	2 d	4/12/04	4/13/04														
78	<b>Remaining Flight Procurements</b>	<b>75%</b>	<b>79 d</b>	<b>10/24/03</b>	<b>2/19/04</b>														
79	Procure IDPU Flight Printed Wiring Board	0%	10 d	2/5/04	2/19/04														
80	Procure SEP Flight Printed Wiring Board	100%	10 d	11/24/03	12/8/03														

ID	Task Name	% Comp	Dur	Start	Finish	2003				2004				2005				200	
						Qtr 4	Qtr 1	Qtr 2	Qtr 3	Qtr 4	Qtr 1	Qtr 2	Qtr 3	Qtr 4	Qtr 1	Qtr 2	Qtr 3	Qtr 4	Qtr 1
81	Procure SWEA Flight Printed Wiring Board	100%	10 d	12/4/03	12/17/03														
82	Procure PLASTIC Flight Printed Wiring Board	100%	10 d	10/24/03	11/6/03														
83	<b>Fabrication</b>	<b>100%</b>	<b>239 d</b>	<b>2/26/03</b>	<b>2/6/04</b>														
84	<b>FM 1 &amp; FM 2</b>	<b>100%</b>	<b>195 d</b>	<b>2/26/03</b>	<b>12/3/03</b>														
85	Re-layout IDPU LVPS Flight Printed Wiring Board	100%	186 d	2/26/03	11/19/03														
86	Re-layout SEP LVPS Flight Printed Wiring Board	100%	32 d	9/24/03	11/7/03														
87	Re-layout SWEA LVPS Flight Printed Wiring Board	100%	5 d	11/26/03	12/3/03														
88	<b>FM 1</b>	<b>100%</b>	<b>45 d</b>	<b>9/29/03</b>	<b>12/3/03</b>														
89	Wind IDPU LVPS FM 1 Magnets	100%	10 d	10/17/03	10/30/03														
90	Wind SEP LVPS FM 1 Magnets	100%	15 d	9/29/03	10/20/03														
91	Wind SWEA LVPS FM 1 Magnets	100%	5 d	11/26/03	12/3/03														
92	Wind PLASTIC LVPS FM 1 Magnets	100%	45 d	9/29/03	12/3/03														
93	<b>FM 2</b>	<b>100%</b>	<b>28 d</b>	<b>12/29/03</b>	<b>2/6/04</b>														
94	Wind HVPS FM 2 Magnets	100%	28 d	12/29/03	2/6/04														
95	Wind IDPU LVPS FM 2 Magnets	100%	28 d	12/29/03	2/6/04														
96	Wind SEP LVPS FM 2 Magnets	100%	28 d	12/29/03	2/6/04														
97	Wind SWEA LVPS FM 2 Magnets	100%	28 d	12/29/03	2/6/04														
98	Wind PLASTIC LVPS FM 2 Magnets	100%	28 d	12/29/03	2/6/04														
99	<b>Assembly</b>	<b>27%</b>	<b>57 d</b>	<b>12/29/03</b>	<b>3/19/04</b>														
100	<b>FM 1</b>	<b>51%</b>	<b>52 d</b>	<b>12/29/03</b>	<b>3/12/04</b>														
101	Assemble IDPU FM 1 LVPS	0%	12 d	2/26/04	3/12/04														
102	Assemble SEP FM 1 LVPS	48%	29 d	1/12/04	2/23/04														
103	Assemble SWEA FM 1 LVPS	0%	14 d	2/13/04	3/4/04														
104	Assemble PLASTIC FM 1 LVPS	100%	29 d	12/29/03	2/9/04														
105	<b>FM 2</b>	<b>0%</b>	<b>29 d</b>	<b>2/9/04</b>	<b>3/19/04</b>														
106	Assemble IDPU FM 2 LVPS	0%	15 d	3/1/04	3/19/04														
107	Assemble SEP FM 2 LVPS	0%	15 d	2/13/04	3/5/04														
108	Assemble SWEA FM 2 LVPS	0%	15 d	2/24/04	3/15/04														
109	Assemble PLASTIC FM 2 LVPS	0%	14 d	2/9/04	2/27/04														
110	Assemble SIT FM 2 HVPS	0%	14 d	2/9/04	2/27/04														
111	<b>Testing</b>	<b>12%</b>	<b>162 d</b>	<b>10/31/03</b>	<b>6/23/04</b>														
112	<b>FM 1 &amp; FM 2</b>	<b>80%</b>	<b>63 d</b>	<b>11/24/03</b>	<b>2/25/04</b>														
113	Coupon Test IDPU Flight Printed Wiring Board	0%	4 d	2/20/04	2/25/04														
114	Coupon Test SEP Flight Printed Wiring Board	100%	5 d	12/9/03	12/15/03														
115	Coupon Test SWEA Flight Printed Wiring Board	100%	6 d	1/9/04	1/16/04														
116	Coupon Test PLASTIC Flight Printed Wiring Board	100%	5 d	11/24/03	12/1/03														
117	<b>FM 1</b>	<b>16%</b>	<b>162 d</b>	<b>10/31/03</b>	<b>6/23/04</b>														
118	<b>IDPU</b>	<b>0%</b>	<b>30 d</b>	<b>3/15/04</b>	<b>4/23/04</b>														
119	Test IDPU FM 1 LVPS	0%	15 d	3/15/04	4/2/04														
120	Coat & Stake IDPU LVPS FM 1 Boards	0%	5 d	4/5/04	4/9/04														

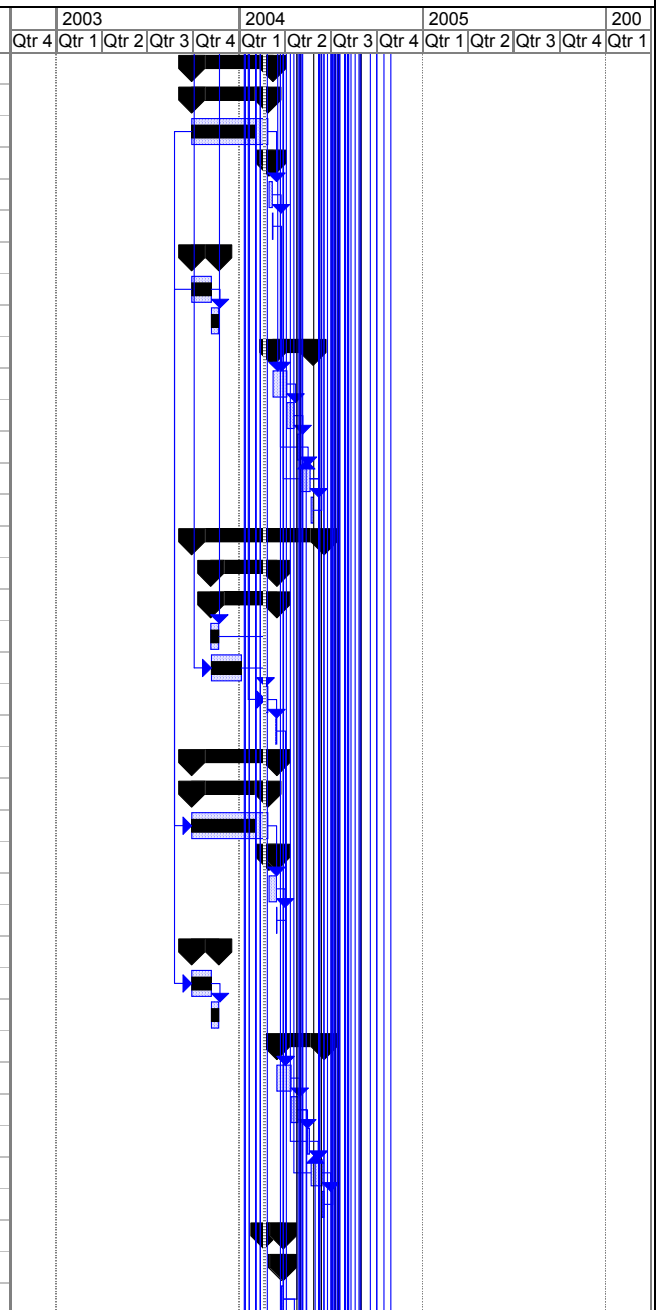


ID	Task Name	% Comp	Dur	Start	Finish	2003				2004				2005				200	
						Qtr 4	Qtr 1	Qtr 2	Qtr 3	Qtr 4	Qtr 1	Qtr 2	Qtr 3	Qtr 4	Qtr 1	Qtr 2	Qtr 3	Qtr 4	Qtr 1
121	Retest IDPU LVPS FM 1 Boards	0%	10 d	4/12/04	4/23/04														
122	<b>SEP</b>	<b>0%</b>	<b>30 d</b>	<b>2/24/04</b>	<b>4/5/04</b>														
123	Test SEP FM 1 LVPS	0%	15 d	2/24/04	3/15/04														
124	Coat & Stake SEP LVPS FM 1 Boards	0%	5 d	3/16/04	3/22/04														
125	Retest SEP LVPS FM 1 Boards	0%	10 d	3/23/04	4/5/04														
126	<b>SWEA</b>	<b>0%</b>	<b>30 d</b>	<b>3/5/04</b>	<b>4/15/04</b>														
127	Test SWEA FM 1 LVPS	0%	15 d	3/5/04	3/25/04														
128	Coat & Stake SWEA LVPS FM 1 Boards	0%	5 d	3/26/04	4/1/04														
129	Retest SWEA LVPS FM 1 Boards	0%	10 d	4/2/04	4/15/04														
130	<b>PLASTIC</b>	<b>0%</b>	<b>30 d</b>	<b>2/10/04</b>	<b>3/23/04</b>														
131	Test PLASTIC FM 1 LVPS	0%	15 d	2/10/04	3/2/04														
132	Coat & Stake PLASTIC LVPS FM 1 Boards	0%	5 d	3/3/04	3/9/04														
133	Retest PLASTIC LVPS FM 1 Boards	0%	10 d	3/10/04	3/23/04														
134	<b>SIT</b>	<b>63%</b>	<b>162 d</b>	<b>10/31/03</b>	<b>6/23/04</b>														
135	Test SIT FM 1 HVPS	100%	25 d	10/31/03	12/8/03														
136	Coat & Stake SIT FM 1 HVPS Boards (at UMD)	0%	5 d	6/3/04	6/9/04														
137	Retest SIT FM 1 HVPS Boards (at UMD)	0%	10 d	6/10/04	6/23/04														
138	<b>FM 2</b>	<b>0%</b>	<b>45 d</b>	<b>3/1/04</b>	<b>4/30/04</b>														
139	<b>IDPU</b>	<b>0%</b>	<b>30 d</b>	<b>3/22/04</b>	<b>4/30/04</b>														
140	Test IDPU FM 2 LVPS	0%	15 d	3/22/04	4/9/04														
141	Coat & Stake IDPU LVPS FM 2 Boards	0%	5 d	4/12/04	4/16/04														
142	Retest IDPU LVPS FM 2 Boards	0%	10 d	4/19/04	4/30/04														
143	<b>SEP</b>	<b>0%</b>	<b>30 d</b>	<b>3/8/04</b>	<b>4/16/04</b>														
144	Test SEP FM 2 LVPS	0%	15 d	3/8/04	3/26/04														
145	Coat & Stake SEP LVPS FM 2 Boards	0%	5 d	3/29/04	4/2/04														
146	Retest SEP LVPS FM 2 Boards	0%	10 d	4/5/04	4/16/04														
147	<b>SWEA</b>	<b>0%</b>	<b>30 d</b>	<b>3/16/04</b>	<b>4/26/04</b>														
148	Test SWEA FM 2 LVPS	0%	15 d	3/16/04	4/5/04														
149	Coat & Stake SWEA LVPS FM 2 Boards	0%	5 d	4/6/04	4/12/04														
150	Retest SWEA LVPS FM 2 Boards	0%	10 d	4/13/04	4/26/04														
151	<b>PLASTIC</b>	<b>0%</b>	<b>30 d</b>	<b>3/1/04</b>	<b>4/9/04</b>														
152	Test PLASTIC FM 2 LVPS	0%	15 d	3/1/04	3/19/04														
153	Coat & Stake PLASTIC LVPS FM 2 Boards	0%	5 d	3/22/04	3/26/04														
154	Retest PLASTIC LVPS FM 2 Boards	0%	10 d	3/29/04	4/9/04														
155	<b>SIT</b>	<b>0%</b>	<b>30 d</b>	<b>3/1/04</b>	<b>4/9/04</b>														
156	Test SIT FM 2 HVPS	0%	15 d	3/1/04	3/19/04														
157	Coat & Stake SIT FM 2 HVPS Boards	0%	5 d	3/22/04	3/26/04														
158	Retest SIT FM 2 HVPS Boards	0%	10 d	3/29/04	4/9/04														
159	<b>IDPU - UCB</b>	<b>69%</b>	<b>340 d</b>	<b>5/5/03</b>	<b>9/7/04</b>														
160	<b>Deliveries</b>	<b>0%</b>	<b>33 d</b>	<b>4/13/04</b>	<b>5/28/04</b>														



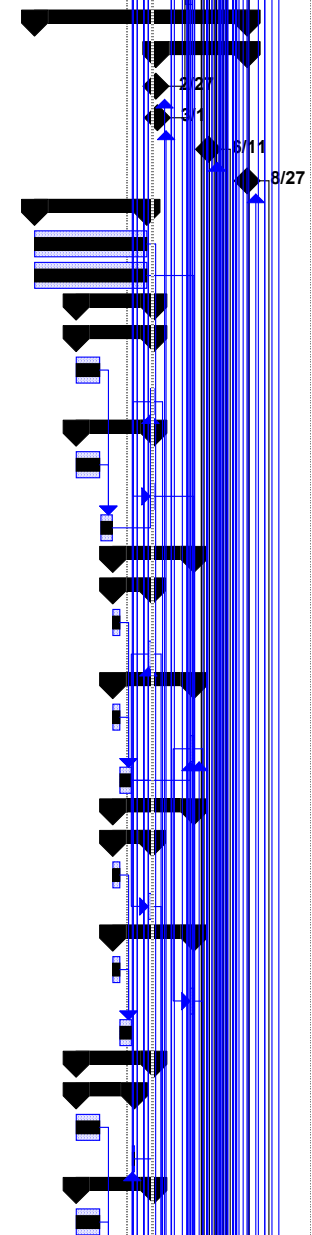
ID	Task Name	% Comp	Dur	Start	Finish	2003				2004				2005				200	
						Qtr 4	Qtr 1	Qtr 2	Qtr 3	Qtr 4	Qtr 1	Qtr 2	Qtr 3	Qtr 4	Qtr 1	Qtr 2	Qtr 3	Qtr 4	Qtr 1
161	IDPU FM 1 Complete (to UCB for Boom I&T, then to CIT for SEP I&T, Suite	0%	0 d	5/21/04	5/21/04														
162	IDPU FM 2 Complete (to CIT for SEP I&T, then to UCB for Boom I&T, Boom	0%	0 d	5/28/04	5/28/04														
163	Deliver IDPU S/W Build 3 (to UNH)	0%	0 d	4/13/04	4/13/04														
164	<b>Flight Software</b>	<b>83%</b>	<b>237 d</b>	<b>5/5/03</b>	<b>4/13/04</b>														
165	IDPU S/W Build #2.5	100%	131 d	5/5/03	11/7/03														
166	IDPU S/W Build #3	69%	165 d	8/15/03	4/13/04														
167	<b>GSE</b>	<b>65%</b>	<b>301 d</b>	<b>6/30/03</b>	<b>9/7/04</b>														
168	STE Science Display	100%	27 d	10/23/03	12/2/03														
169	SWEA Science Display	91%	162 d	6/30/03	2/23/04														
170	GSE Continued Development	47%	291 d	7/15/03	9/7/04														
171	<b>Integration &amp; Test</b>	<b>38%</b>	<b>162 d</b>	<b>10/7/03</b>	<b>5/28/04</b>														
172	IDPU DCB FM 2 Board Level Testing	100%	15 d	10/7/03	10/28/03														
173	IDPU DCB Clean/Stake/Coat (FM 1 & FM 2)	100%	10 d	12/26/03	1/9/04														
174	<b>FM 1</b>	<b>0%</b>	<b>20 d</b>	<b>4/26/04</b>	<b>5/21/04</b>														
175	IDPU FM 1 I & T	0%	5 d	4/26/04	4/30/04														
176	IDPU FM 1 Vibration	0%	5 d	5/3/04	5/7/04														
177	IDPU FM 1 Thermal Vacuum & Bake Out	0%	10 d	5/10/04	5/21/04														
178	<b>FM 2</b>	<b>0%</b>	<b>20 d</b>	<b>5/3/04</b>	<b>5/28/04</b>														
179	IDPU FM 2 I & T	0%	5 d	5/3/04	5/7/04														
180	IDPU FM 2 Vibration	0%	5 d	5/10/04	5/14/04														
181	IDPU FM 2 Thermal Vacuum & Bake Out	0%	10 d	5/17/04	5/28/04														
182	<b>BOOM Suite - UCB</b>	<b>67%</b>	<b>315 d</b>	<b>7/1/03</b>	<b>9/28/04</b>														
183	<b>BOOM Structure - UCB</b>	<b>73%</b>	<b>195 d</b>	<b>9/10/03</b>	<b>6/18/04</b>														
184	<b>Deliveries</b>	<b>0%</b>	<b>112 d</b>	<b>1/9/04</b>	<b>6/18/04</b>														
185	Protoflight Boom available for I&T (if needed)	100%	0 d	1/9/04	1/9/04														
186	Deliver Boom Structure FM 1 (stays at UCB for Boom Suite FM 1 I&T)	0%	0 d	5/27/04	5/27/04														
187	Deliver Boom Structure FM 2 (stays at UCB for Boom Suite FM 2 I&T)	0%	0 d	6/18/04	6/18/04														
188	<b>Protoflight</b>	<b>100%</b>	<b>79 d</b>	<b>9/16/03</b>	<b>1/9/04</b>														
189	Protoflight Boom Post Environmental Deployment Test	100%	35 d	9/16/03	11/4/03														
190	Document Protoflight Boom Test Results	100%	44 d	11/5/03	1/9/04														
191	<b>Flight Procurements</b>	<b>100%</b>	<b>40 d</b>	<b>9/10/03</b>	<b>11/5/03</b>														
192	Receive and Inspect Flight Boom Structure Tubes (FM 1)	100%	32 d	9/10/03	10/24/03														
193	Receive and Inspect Flight Boom Structure Tubes (FM 2)	100%	40 d	9/10/03	11/5/03														
194	<b>FM 1</b>	<b>65%</b>	<b>167 d</b>	<b>9/29/03</b>	<b>5/27/04</b>														
195	<b>Telescoping</b>	<b>86%</b>	<b>84 d</b>	<b>10/27/03</b>	<b>2/29/04</b>														
196	<b>Fabrication, Assembly &amp; Test</b>	<b>86%</b>	<b>84 d</b>	<b>10/27/03</b>	<b>2/29/04</b>														
197	Machine FM 1 Boom Structure Tubes as necessary	100%	5 d	10/27/03	10/31/03														
198	Machine FM 1 Boom Structure Parts (Rings)	100%	38 d	11/7/03	1/5/04														
199	Assemble FM 1 Boom Structure Telescoping Assembly	0%	5 d	2/23/04	2/27/04														
200	Test FM 1 Boom Structure Telescoping Assembly	0%	2 d	2/28/04	2/29/04														

ID	Task Name	% Comp	Dur	Start	Finish	2003				2004				2005				200	
						Qtr 4	Qtr 1	Qtr 2	Qtr 3	Qtr 4	Qtr 1	Qtr 2	Qtr 3	Qtr 4	Qtr 1	Qtr 2	Qtr 3	Qtr 4	Qtr 1
201	<b>Harness</b>	76%	109 d	9/29/03	3/8/04														
202	<b>Fabrication</b>	82%	103 d	9/29/03	2/27/04														
203	Machine FM 1 Harness Parts	82%	103 d	9/29/03	2/27/04														
204	<b>Assembly &amp; Test</b>	0%	6 d	3/1/04	3/8/04														
205	Assemble FM 1 Harness subassembly	0%	7 d	3/1/04	3/7/04														
206	FM1 Harness Test	0%	1 d	3/8/04	3/8/04														
207	<b>Mounting</b>	100%	38 d	9/29/03	11/21/03														
208	FM 1 Boom Structure Mounting Fabrication	100%	28 d	9/29/03	11/6/03														
209	FM 1 Boom Structure Mounting Assembly	100%	10 d	11/7/03	11/21/03														
210	<b>Integration &amp; Test</b>	0%	58 d	3/9/04	5/27/04														
211	Integrate FM 1 Boom Structure subassemblies & Harness Comple	0%	20 d	3/9/04	4/5/04														
212	FM 1 Boom Structure Deployment Test	0%	10 d	4/6/04	4/19/04														
213	FM 1 Boom Structure Vibration Test	0%	4 d	4/27/04	4/30/04														
214	FM 1 Boom Structure Themal Vac & Bake Out	0%	15 d	5/3/04	5/21/04														
215	FM 1 Boom Structure Post Environmental Deployment Test	0%	4 d	5/24/04	5/27/04														
216	<b>FM 2</b>	65%	182 d	9/29/03	6/18/04														
217	<b>Telescoping</b>	88%	88 d	11/6/03	3/16/04														
218	<b>Fabrication, Assembly &amp; Test</b>	88%	88 d	11/6/03	3/16/04														
219	Machine FM 2 Boom Structure Tubes as necessary	100%	11 d	11/6/03	11/21/03														
220	Machine FM 2 Boom Structure Parts (Rings)	100%	38 d	11/7/03	1/5/04														
221	Assemble FM 2 Boom Structure Telescoping Assembly	0%	5 d	2/23/04	2/27/04														
222	Test FM 2 Boom Structure Telescoping Assembly	0%	2 d	3/15/04	3/16/04														
223	<b>Harness</b>	73%	115 d	9/29/03	3/16/04														
224	<b>Fabrication</b>	82%	103 d	9/29/03	2/27/04														
225	Machine FM 2 Harness Parts	82%	103 d	9/29/03	2/27/04														
226	<b>Assembly &amp; Test</b>	0%	12 d	3/1/04	3/16/04														
227	Assemble FM 2 Harness subassembly	0%	11 d	3/1/04	3/15/04														
228	FM 2 Harness Test	0%	1 d	3/16/04	3/16/04														
229	<b>Mounting</b>	100%	38 d	9/29/03	11/21/03														
230	FM 2 Boom Structure Mountings Fabrication	100%	28 d	9/29/03	11/6/03														
231	FM 2 Boom Structure Mountings Assembly	100%	10 d	11/7/03	11/21/03														
232	<b>Integration &amp; Test</b>	0%	67 d	3/17/04	6/18/04														
233	Integrate FM 2 Boom Structure subassemblies & Harness Comple	0%	20 d	3/17/04	4/13/04														
234	FM 2 Boom Structure Deployment Test	0%	10 d	4/14/04	4/27/04														
235	FM 2 Boom Structure Vibration Test	0%	4 d	5/17/04	5/20/04														
236	FM 2 Boom Structure Themal Vac & Bake Out	0%	15 d	5/24/04	6/14/04														
237	FM 2 Boom Structure Post Environmental Deployment Test	0%	4 d	6/15/04	6/18/04														
238	<b>MAG - GSFC</b>	0%	27 d	2/20/04	3/29/04														
239	<b>Deliveries</b>	0%	2 d	3/26/04	3/29/04														
240	Deliver MAG FM 1 (to UCB for IDPU/BOOM Suite FM 1 I&T)	0%	2 d	3/26/04	3/29/04														



ID	Task Name	% Comp	Dur	Start	Finish	2003				2004				2005				200	
						Qtr 4	Qtr 1	Qtr 2	Qtr 3	Qtr 4	Qtr 1	Qtr 2	Qtr 3	Qtr 4	Qtr 1	Qtr 2	Qtr 3	Qtr 4	Qtr 1
241	Deliver MAG FM 2 (to UCB for IDPU/BOOM Suite FM 2 I&T)	0%	2 d	3/26/04	3/29/04														
242	<b>FM 1</b>	<b>0%</b>	<b>25 d</b>	<b>2/20/04</b>	<b>3/25/04</b>														
243	FM 1 MAG Testing	0%	10 d	2/20/04	3/4/04														
244	MAG FM 1 Calibration	0%	15 d	3/5/04	3/25/04														
245	<b>FM 2</b>	<b>0%</b>	<b>25 d</b>	<b>2/20/04</b>	<b>3/25/04</b>														
246	FM 2 MAG Testing	0%	10 d	2/20/04	3/4/04														
247	MAG FM 2 Calibration	0%	15 d	3/5/04	3/25/04														
248	<b>SWEA - CESR</b>	<b>6%</b>	<b>93 d</b>	<b>12/8/03</b>	<b>4/20/04</b>														
249	<b>Deliveries</b>	<b>50%</b>	<b>93 d</b>	<b>12/8/03</b>	<b>4/20/04</b>														
250	SWEA FM 1 Delivery to UCB	100%	3 d	12/8/03	12/10/03														
251	SWEA FM 2 Delivery to UCB	0%	3 d	4/16/04	4/20/04														
252	<b>FM 2</b>	<b>0%</b>	<b>47 d</b>	<b>2/10/04</b>	<b>4/15/04</b>														
253	SWEA FM 2 Final Assembly (Block 2)	0%	3 d	2/10/04	2/12/04														
254	SWEA FM 2 Calibration	0%	44 d	2/13/04	4/15/04														
255	<b>STE - UCB</b>	<b>67%</b>	<b>174 d</b>	<b>8/29/03</b>	<b>5/10/04</b>														
256	<b>Deliveries</b>	<b>0%</b>	<b>18 d</b>	<b>4/14/04</b>	<b>5/10/04</b>														
257	Deliver STE-D FM 1 (stays at UCB for SWEA/STE-D FM 1 I&T)	0%	0 d	4/14/04	4/14/04														
258	Deliver STE-D FM 2 (stays at UCB for SWEA/STE-D FM 2 I&T)	0%	0 d	5/10/04	5/10/04														
259	Deliver STE-U FM 1 (stays at UCB for BOOM Suite FM 1 I&T)	0%	0 d	4/20/04	4/20/04														
260	Deliver STE-U FM 2 (stays at UCB for BOOM Suite FM 2 I&T)	0%	0 d	5/10/04	5/10/04														
261	<b>STE-U/D Housing</b>	<b>100%</b>	<b>53 d</b>	<b>11/21/03</b>	<b>2/9/04</b>														
262	Fabricate STE FM 1 Box	100%	53 d	11/21/03	2/9/04														
263	Fabricate STE FM 2 Box	100%	53 d	11/21/03	2/9/04														
264	<b>STE-U/D Detector Boards</b>	<b>56%</b>	<b>174 d</b>	<b>8/29/03</b>	<b>5/10/04</b>														
265	Coupon Test STE FM 1 & FM 2 Detector Printed Wiring Board	100%	17 d	10/10/03	11/4/03														
266	<b>FM 1</b>	<b>58%</b>	<b>160 d</b>	<b>8/29/03</b>	<b>4/20/04</b>														
267	Fabrication STE FM 1 Detector Printed Wiring Board	100%	29 d	8/29/03	10/9/03														
268	Load STE FM 1 Detector Printed Wiring Board	100%	60 d	11/5/03	2/3/04														
269	Test STE FM 1 Detector Printed Wiring Board	0%	10 d	2/4/04	2/18/04														
270	<b>Integration &amp; Test</b>	<b>0%</b>	<b>44 d</b>	<b>2/19/04</b>	<b>4/20/04</b>														
271	Integrate & Test STE-U/D FM 1 Detectors W/ FM 1 Housings	0%	20 d	2/19/04	3/17/04														
272	Calibrate STE-U/D FM 1	0%	20 d	3/18/04	4/14/04														
273	STE-U FM 1 Thermal Vacuum/Balance/Bake Out	0%	14 d	4/1/04	4/20/04														
274	<b>FM 2</b>	<b>48%</b>	<b>174 d</b>	<b>8/29/03</b>	<b>5/10/04</b>														
275	Fabricate STE FM 2 Detector Printed Wiring Board	100%	29 d	8/29/03	10/9/03														
276	Load STE FM 2 Detector Printed Wiring Board	60%	63 d	11/5/03	3/17/04														
277	Test STE FM 2 Detector Printed Wiring Board	0%	10 d	3/18/04	3/31/04														
278	<b>Integration &amp; Test</b>	<b>0%</b>	<b>28 d</b>	<b>4/1/04</b>	<b>5/10/04</b>														
279	Integrate & Test STE-U/D FM 2 Detectors W/ FM 2 Housings	0%	10 d	4/1/04	4/14/04														
280	Calibrate STE-U/D FM 2	0%	18 d	4/15/04	5/10/04														

ID	Task Name	% Comp	Dur	Start	Finish	2003				2004				2005				200	
						Qtr 4	Qtr 1	Qtr 2	Qtr 3	Qtr 4	Qtr 1	Qtr 2	Qtr 3	Qtr 4	Qtr 1	Qtr 2	Qtr 3	Qtr 4	Qtr 1
281	STE-U FM 2 Thermal Vacuum/Bake Out	0%	10 d	4/27/04	5/10/04														
282	<b>STE and SWEA - UCB</b>	<b>73%</b>	<b>294 d</b>	<b>7/1/03</b>	<b>8/27/04</b>														
283	<b>Deliveries</b>	<b>0%</b>	<b>129 d</b>	<b>2/27/04</b>	<b>8/27/04</b>														
284	Deliver STE-U FM 1 Interface (stays at UCB for IDPU FM 1 I&T)	0%	0 d	2/27/04	2/27/04														
285	Deliver STE-U FM 2 Interface (stays at UCB for IDPU FM 2 I&T)	0%	0 d	3/1/04	3/1/04														
286	Deliver SWEA/STE-D FM 1 (stays at UCB for Boom Suite FM 1 I&T)	0%	0 d	6/11/04	6/11/04														
287	Deliver SWEA/STE-D FM 2 (stays at UCB for Boom Suite FM 2 I&T)	0%	0 d	8/27/04	8/27/04														
288	<b>SWEA Pedestal</b>	<b>100%</b>	<b>152 d</b>	<b>7/1/03</b>	<b>2/9/04</b>														
289	Fabricate SWEA FM 1 Baseplate	100%	152 d	7/1/03	2/9/04														
290	Fabricate SWEA FM 2 Baseplate	100%	152 d	7/1/03	2/9/04														
291	<b>STE-D Pre-Amp Board</b>	<b>89%</b>	<b>104 d</b>	<b>9/22/03</b>	<b>2/23/04</b>														
292	<b>FM 1</b>	<b>87%</b>	<b>104 d</b>	<b>9/22/03</b>	<b>2/23/04</b>														
293	Fabricate STE-D FM 1 Preamp Printed Wiring Board	100%	34 d	9/22/03	11/7/03														
294	Load STE-D FM 1 Preamp Printed Wiring Board	0%	5 d	2/17/04	2/23/04														
295	<b>FM 2</b>	<b>87%</b>	<b>104 d</b>	<b>9/22/03</b>	<b>2/23/04</b>														
296	Fabricate STE-D FM 2 Preamp Printed Wiring Board	100%	34 d	9/22/03	11/7/03														
297	Load STE-D FM 2 Preamp Printed Wiring Board	0%	5 d	2/17/04	2/23/04														
298	Coupon Test STE-D FM 1 & FM 2 Pre-Amp Printed Wiring Boards	100%	15 d	11/10/03	12/2/03														
299	<b>STE-D Shaper Board</b>	<b>78%</b>	<b>112 d</b>	<b>12/4/03</b>	<b>5/13/04</b>														
300	<b>FM 1</b>	<b>67%</b>	<b>53 d</b>	<b>12/4/03</b>	<b>2/20/04</b>														
301	Fabricate STE-D FM 1 Shaper Printed Wiring Board	100%	10 d	12/4/03	12/17/03														
302	Load STE-D FM 1 Shaper Printed Wiring Board	0%	5 d	2/13/04	2/20/04														
303	<b>FM 2</b>	<b>67%</b>	<b>112 d</b>	<b>12/4/03</b>	<b>5/13/04</b>														
304	Fabricate STE-D FM 2 Shaper Printed Wiring Board	100%	10 d	12/4/03	12/17/03														
305	Load STE-D FM 2 Shaper Printed Wiring Board	0%	5 d	5/7/04	5/13/04														
306	Coupon Test STE-D FM 1 & FM 2 Shaper Printed Wiring Boards	100%	15 d	12/18/03	1/9/04														
307	<b>STE-D Interface Board</b>	<b>78%</b>	<b>112 d</b>	<b>12/4/03</b>	<b>5/13/04</b>														
308	<b>FM 1</b>	<b>67%</b>	<b>53 d</b>	<b>12/4/03</b>	<b>2/20/04</b>														
309	Fabricate SWEA / STE-D FM 1 Digital to Analog Converter Printed	100%	10 d	12/4/03	12/17/03														
310	Load SWEA / STE-D FM 1 Digital to Analog Converter Printed Wir	0%	5 d	2/13/04	2/20/04														
311	<b>FM 2</b>	<b>67%</b>	<b>112 d</b>	<b>12/4/03</b>	<b>5/13/04</b>														
312	Fabricate SWEA / STE-D FM 2 Digital to Analog Converter Printed	100%	10 d	12/4/03	12/17/03														
313	Load SWEA / STE-D FM 2 Digital to Analog Converter Printed Wir	0%	5 d	5/7/04	5/13/04														
314	Coupon Test STE-D FM 1 & FM 2 D/A Converter Printed Wiring Boards	100%	15 d	12/18/03	1/9/04														
315	<b>STE-U Pre-Amp Board</b>	<b>95%</b>	<b>104 d</b>	<b>9/22/03</b>	<b>2/23/04</b>														
316	<b>FM 1</b>	<b>100%</b>	<b>79 d</b>	<b>9/22/03</b>	<b>1/15/04</b>														
317	Fabricate STE-U FM 1 Preamp Printed Wiring Board	100%	34 d	9/22/03	11/7/03														
318	Load STE-U FM 1 Preamp Printed Wiring Board	100%	4 d	1/12/04	1/15/04														
319	<b>FM 2</b>	<b>87%</b>	<b>104 d</b>	<b>9/22/03</b>	<b>2/23/04</b>														
320	Fabricate STE-U FM 2 Preamp Printed Wiring Board	100%	34 d	9/22/03	11/7/03														

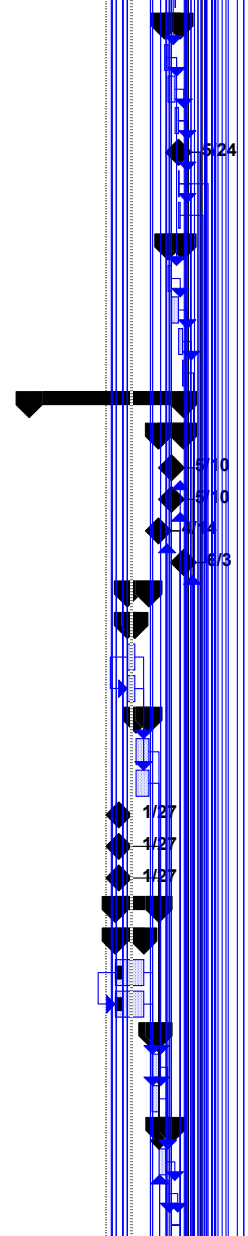




ID	Task Name	% Comp	Dur	Start	Finish	2003				2004				2005				200
						Qtr 4	Qtr 1	Qtr 2	Qtr 3	Qtr 4	Qtr 1	Qtr 2	Qtr 3	Qtr 4	Qtr 1	Qtr 2	Qtr 3	Qtr 4
321	Load STE-U FM 2 Preamp Printed Wiring Board	0%	5 d	2/17/04	2/23/04													
322	Coupon Test STE-U FM 1 & FM 2 Pre-Amp Printed Wiring Boards	100%	15 d	11/10/03	12/2/03													
323	<b>STE-U Shaper &amp; Interface Board</b>	<b>78%</b>	<b>53 d</b>	<b>12/4/03</b>	<b>2/20/04</b>													
324	<b>FM 1</b>	<b>67%</b>	<b>53 d</b>	<b>12/4/03</b>	<b>2/20/04</b>													
325	Fabricate STE-U FM 1 Shaper & Interface Printed Wiring Board	100%	10 d	12/4/03	12/17/03													
326	Load STE-U FM 1 Shaper & Interface Printed Wiring Board	0%	5 d	2/13/04	2/20/04													
327	<b>FM 2</b>	<b>67%</b>	<b>53 d</b>	<b>12/4/03</b>	<b>2/20/04</b>													
328	Fabricate STE-U FM 2 Shaper & Interface Printed Wiring Board	100%	10 d	12/4/03	12/17/03													
329	Load STE-U FM 2 Shaper & Interface Printed Wiring Board	0%	5 d	2/13/04	2/20/04													
330	Coupon Test STE-U FM 1 & FM 2 Shaper & Interface Printed Wiring Board	100%	15 d	12/18/03	1/9/04													
331	<b>Integration &amp; Test</b>	<b>0%</b>	<b>134 d</b>	<b>2/23/04</b>	<b>8/27/04</b>													
332	<b>FM 1</b>	<b>0%</b>	<b>114 d</b>	<b>2/23/04</b>	<b>7/30/04</b>													
333	Integrate & Test STE-U FM 1 Interface Boards	0%	5 d	2/23/04	2/27/04													
334	Integrate & Test SWEA/STE-D FM 1 Interface Boards	0%	20 d	2/24/04	3/22/04													
335	Integrate & Test SWEA/STE-D FM 1 Interface with SWEA/STE-D	0%	10 d	4/16/04	4/29/04													
336	Clean/Coat/Stake SWEA/STE-D Interface	0%	10 d	3/23/04	4/5/04													
337	Integrate & Test SWEA/STE-D FM 1 Combined	0%	5 d	4/30/04	5/6/04													
338	Calibrate SWEA/STE FM 1	0%	20 d	5/7/04	6/4/04													
339	SWEA/STE FM 1 Vibration	0%	5 d	6/7/04	6/11/04													
340	SWEA/STE-D FM 1 Thermal Vac/Thermal Balance/Bake Out	0%	14 d	7/13/04	7/30/04													
341	<b>FM 2</b>	<b>0%</b>	<b>133 d</b>	<b>2/24/04</b>	<b>8/27/04</b>													
342	Integrate & Test STE-U FM 2 Interface Boards	0%	5 d	2/24/04	3/1/04													
343	Integrate & Test SWEA/STE-D FM 2 Interface Boards	0%	20 d	5/14/04	6/11/04													
344	Integrate & Test SWEA/STE-D FM 2 Interface with SWEA/STE-D I	0%	10 d	6/14/04	6/25/04													
345	Integrate & Test SWEA/STE-D FM 2 Combined	0%	10 d	6/28/04	7/9/04													
346	Calibrate SWEA/STE FM 2	0%	20 d	7/12/04	8/6/04													
347	SWEA/STE FM 2 Vibration	0%	5 d	8/9/04	8/13/04													
348	SWEA/STE-D FM 2 Thermal Vac & bake Out	0%	10 d	8/16/04	8/27/04													
349	<b>Boom Suite I&amp;T - UCB</b>	<b>0%</b>	<b>113 d</b>	<b>4/21/04</b>	<b>9/28/04</b>													
350	<b>FM 1</b>	<b>0%</b>	<b>82 d</b>	<b>4/21/04</b>	<b>8/13/04</b>													
351	FM 1 Boom/MAG/STE-U I&T	0%	4 d	4/21/04	4/26/04													
352	FM 1 Boom/SWEA/STE/MAG I&T	0%	2 d	6/14/04	6/15/04													
353	FM 1 Integrated Boom/IDPU I&T	0%	4 d	6/16/04	6/21/04													
354	Final BOOM Suite FM 1 I & T	0%	10 d	8/2/04	8/13/04													
355	<b>FM 2</b>	<b>0%</b>	<b>99 d</b>	<b>5/11/04</b>	<b>9/28/04</b>													
356	FM 2 Boom/MAG/STE-U I&T	0%	4 d	5/11/04	5/14/04													
357	FM 2 Boom/SWEA/STE/MAG I&T	0%	2 d	8/30/04	8/31/04													
358	FM 2 Integrated Boom/IDPU I&T	0%	4 d	9/1/04	9/7/04													
359	Boom Suite FM 2 EMC	0%	5 d	9/8/04	9/14/04													
360	Final BOOM Suite FM 2 I & T	0%	10 d	9/15/04	9/28/04													

ID	Task Name	% Comp	Dur	Start	Finish	2003				2004				2005				200		
						Qtr 4	Qtr 1	Qtr 2	Qtr 3	Qtr 4	Qtr 1	Qtr 2	Qtr 3	Qtr 4	Qtr 1	Qtr 2	Qtr 3	Qtr 4	Qtr 1	
361	<b>SEP Suite - CIT</b>	<b>42%</b>	<b>352 d</b>	<b>6/2/03</b>	<b>10/21/04</b>															
362	<b>SEP Mechanical - Sandy Shuman (GSFC)</b>	<b>1%</b>	<b>90 d</b>	<b>1/27/04</b>	<b>6/2/04</b>															
363	<b>SIT Electronics Enclosure (Priority 1)</b>	<b>0%</b>	<b>26 d</b>	<b>2/9/04</b>	<b>3/16/04</b>															
364	Complete Design/Drawings for SIT Enclosure	0%	10 d	2/9/04	2/23/04															
365	Fabrication of SIT Enclosure	0%	10 d	2/24/04	3/8/04															
366	Inspection and Final Assembly of SIT Enclosure	0%	5 d	3/9/04	3/15/04															
367	Deliver SIT Enclosure to UMD	0%	1 d	3/16/04	3/16/04															
368	<b>SEP FM 1 &amp; FM 2 LVPS Boxes (Priority 2)</b>	<b>0%</b>	<b>23 d</b>	<b>2/9/04</b>	<b>3/11/04</b>															
369	Complete Design/Drawings for SEP LVPS Boxes	0%	5 d	2/9/04	2/13/04															
370	Fabrication of SEP LVPS Boxes	0%	10 d	2/17/04	3/1/04															
371	Inspection and Final Assembly of SEP LVPS Boxes	0%	5 d	3/2/04	3/8/04															
372	Deliver SEP LVPS Boxes to UCB	0%	3 d	3/9/04	3/11/04															
373	<b>SEP Electronics Enclosure (Priority 3)</b>	<b>0%</b>	<b>31 d</b>	<b>2/17/04</b>	<b>3/30/04</b>															
374	Complete Design/Drawings for SEP Enclosure	0%	13 d	2/17/04	3/4/04															
375	Fabrication of SEP Enclosure	0%	10 d	3/5/04	3/18/04															
376	Inspection and Final Assembly of SEP Enclosure	0%	5 d	3/19/04	3/25/04															
377	Deliver SEP Enclosure to CIT	0%	3 d	3/26/04	3/30/04															
378	<b>SEP Central Bias Supply Shields (Priority 4)</b>	<b>0%</b>	<b>20 d</b>	<b>3/5/04</b>	<b>4/1/04</b>															
379	Complete Design/Drawings for Bias Supply Shields	0%	5 d	3/5/04	3/11/04															
380	Fabrication of Bias Supply Shields	0%	10 d	3/12/04	3/25/04															
381	Inspection and Delivery (to CIT) of Bias Supply Shields	0%	5 d	3/26/04	4/1/04															
382	<b>LET Telescope (Priority 5)</b>	<b>0%</b>	<b>26 d</b>	<b>3/12/04</b>	<b>4/16/04</b>															
383	Complete Design/Drawings for LET Telescope	0%	8 d	3/12/04	3/23/04															
384	Fabrication of LET Telescope	0%	10 d	3/24/04	4/6/04															
385	Inspection and Final Assembly of LET Telescope	0%	5 d	4/7/04	4/13/04															
386	Deliver LET Telescope to CIT	0%	3 d	4/14/04	4/16/04															
387	<b>HET Electronics Enclosure (Priority 6)</b>	<b>0%</b>	<b>23 d</b>	<b>3/24/04</b>	<b>4/23/04</b>															
388	Complete Design/Drawings for HET Enclosure	0%	8 d	3/24/04	4/2/04															
389	Fabrication of HET Enclosure	0%	10 d	4/5/04	4/16/04															
390	Inspection and Final Assembly of HET Enclosure	0%	5 d	4/19/04	4/23/04															
391	Deliver HET Enclosure (stays at GSFC)	0%	0 d	4/23/04	4/23/04															
392	<b>HET Telescope (Priority 7)</b>	<b>7%</b>	<b>68 d</b>	<b>1/27/04</b>	<b>4/30/04</b>															
393	On Going work for HET Telescope (Complete Design/Drawings & Prep)	9%	46 d	1/27/04	3/31/04															
394	Fabrication of HET Telescope	0%	10 d	4/1/04	4/14/04															
395	Inspection and Final Assembly of HET Telescope	0%	5 d	4/26/04	4/30/04															
396	Deliver HET Telescope (stays at GSFC)	0%	0 d	4/30/04	4/30/04															
397	<b>SIT Telescope (Priority 8)</b>	<b>0%</b>	<b>34 d</b>	<b>4/1/04</b>	<b>5/18/04</b>															
398	Complete Design/Drawings for SIT Telescope	0%	18 d	4/1/04	4/26/04															
399	Fabrication of SIT Telescope	0%	10 d	4/27/04	5/10/04															
400	Inspection and Final Assembly of SIT Telescope	0%	5 d	5/11/04	5/17/04															

ID	Task Name	% Comp	Dur	Start	Finish	2003				2004				2005				200	
						Qtr 4	Qtr 1	Qtr 2	Qtr 3	Qtr 4	Qtr 1	Qtr 2	Qtr 3	Qtr 4	Qtr 1	Qtr 2	Qtr 3	Qtr 4	Qtr 1
401	Deliver SIT Telescope to UMD	0%	1 d	5/18/04	5/18/04														
402	<b>Shipping Containers for HET, SIT &amp; SEP Central (Priority 9)</b>	<b>0%</b>	<b>23 d</b>	<b>4/27/04</b>	<b>5/27/04</b>														
403	Design	0%	5 d	4/27/04	5/3/04														
404	Fabrication/Machining	0%	10 d	5/4/04	5/17/04														
405	Inspection and Assembly	0%	5 d	5/18/04	5/24/04														
406	HET Container stays at GSFC	0%	0 d	5/24/04	5/24/04														
407	SIT Container to UMD	0%	1 d	5/25/04	5/25/04														
408	SEP Central Container to CIT	0%	3 d	5/25/04	5/27/04														
409	<b>LET Radiation Test Fixture (Priority 10)</b>	<b>0%</b>	<b>21 d</b>	<b>5/4/04</b>	<b>6/2/04</b>														
410	Design	0%	5 d	5/4/04	5/10/04														
411	Fabrication	0%	10 d	5/11/04	5/24/04														
412	Inspection and Assembly	0%	5 d	5/25/04	6/1/04														
413	Deliver to CIT for SEP I&T	0%	1 d	6/2/04	6/2/04														
414	<b>SEP Central - CIT</b>	<b>31%</b>	<b>211 d</b>	<b>8/1/03</b>	<b>6/3/04</b>														
415	<b>Deliveries</b>	<b>0%</b>	<b>35 d</b>	<b>4/14/04</b>	<b>6/3/04</b>														
416	Deliver all SEP Cen FM 1 Boards to SEP I&T (stays at CIT)	0%	0 d	5/10/04	5/10/04														
417	Deliver all SEP Cen FM 2 Boards & FM 2 LVPS to SEP I&T (stays at C	0%	0 d	5/10/04	5/10/04														
418	SEP Central Build 3 Software Complete	0%	0 d	4/14/04	4/14/04														
419	Final SEP Central Flight Software Complete	0%	0 d	6/3/04	6/3/04														
420	<b>Logic Board</b>	<b>0%</b>	<b>30 d</b>	<b>2/13/04</b>	<b>3/26/04</b>														
421	<b>Assembly</b>	<b>0%</b>	<b>10 d</b>	<b>2/13/04</b>	<b>2/27/04</b>														
422	Assemble FM 1 SEP Central Logic board	0%	10 d	2/13/04	2/27/04														
423	Assemble FM 2 SEP Central Logic board	0%	10 d	2/13/04	2/27/04														
424	<b>Test</b>	<b>0%</b>	<b>20 d</b>	<b>3/1/04</b>	<b>3/26/04</b>														
425	Test FM 1 SEP Central Logic board (initial)	0%	20 d	3/1/04	3/26/04														
426	Test FM 2 SEP Central Logic board (initial)	0%	20 d	3/1/04	3/26/04														
427	<b>Analog/Post-Reg Board</b>	<b>100%</b>	<b>0 d</b>	<b>1/27/04</b>	<b>1/27/04</b>														
428	FM 1 Analog/Post-Reg Board Complete Test and awaiting Conformal C	100%	0 d	1/27/04	1/27/04														
429	FM 2 Analog/Post-Reg Board Complete Test and awaiting Conformal C	100%	0 d	1/27/04	1/27/04														
430	<b>SEP Solid State Detector Bias Supply Board</b>	<b>18%</b>	<b>62 d</b>	<b>1/20/04</b>	<b>4/15/04</b>														
431	<b>Assembly &amp; Initial Test</b>	<b>23%</b>	<b>40 d</b>	<b>1/20/04</b>	<b>3/16/04</b>														
432	Assemble and Initial Test FM 1 SSD Bias Supply Board	23%	40 d	1/20/04	3/16/04														
433	Assemble and Initial Test FM 2 SSD Bias Supply Board	23%	40 d	1/20/04	3/16/04														
434	<b>Final Test</b>	<b>0%</b>	<b>10 d</b>	<b>4/2/04</b>	<b>4/15/04</b>														
435	Final Test FM 1 SSD Bias Supply Board	0%	10 d	4/2/04	4/15/04														
436	Final Test FM 2 SSD Bias Supply Board	0%	10 d	4/2/04	4/15/04														
437	<b>Conformal Coat, Mass Properties and Bake Out (SEP Central, LET, SEF</b>	<b>0%</b>	<b>17 d</b>	<b>4/16/04</b>	<b>5/10/04</b>														
438	Stake/Conformal Coat All SEP Central and LET Boards	0%	10 d	4/16/04	4/29/04														
439	Mass Properties/Photo All SEP Central and LET Boards	0%	4 d	4/30/04	5/5/04														
440	Bake Out All SEP Central/LET Boards and SEP LVPS (FM 1 & 2)	0%	3 d	5/6/04	5/10/04														

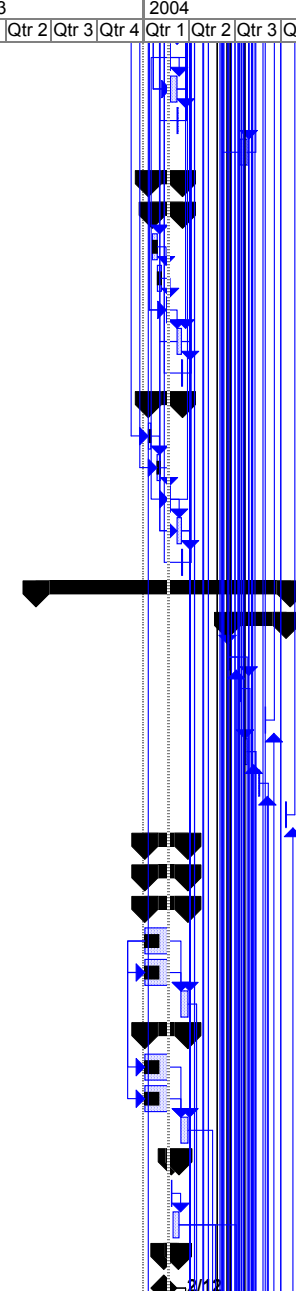


ID	Task Name	% Comp	Dur	Start	Finish	2003				2004				2005				200	
						Qtr 4	Qtr 1	Qtr 2	Qtr 3	Qtr 4	Qtr 1	Qtr 2	Qtr 3	Qtr 4	Qtr 1	Qtr 2	Qtr 3	Qtr 4	Qtr 1
441	<b>Flight Software</b>	<b>49%</b>	<b>211 d</b>	<b>8/1/03</b>	<b>6/3/04</b>														
442	SEP Central Build 3	59%	176 d	8/1/03	4/14/04														
443	Final Flight S/W Build	0%	35 d	4/15/04	6/3/04														
444	<b>HET - GSFC</b>	<b>19%</b>	<b>119 d</b>	<b>1/6/04</b>	<b>6/23/04</b>														
445	<b>Deliveries</b>	<b>0%</b>	<b>38 d</b>	<b>4/30/04</b>	<b>6/23/04</b>														
446	Deliver HET FM 1 (to CIT for SEP Suite I&T)	0%	2 d	6/1/04	6/2/04														
447	Deliver HET FM 2 (to CIT for SEP Suite I&T)	0%	2 d	6/22/04	6/23/04														
448	Deliver Final HET Flight Software to SEP I&T	0%	2 d	4/30/04	5/3/04														
449	<b>Detectors</b>	<b>34%</b>	<b>60 d</b>	<b>1/6/04</b>	<b>3/31/04</b>														
450	Receive & Inspect HET Flight Detectors	45%	40 d	1/6/04	3/3/04														
451	<b>Detector Testing</b>	<b>30%</b>	<b>60 d</b>	<b>1/6/04</b>	<b>3/31/04</b>														
452	Capacitance, Current, Depletion, Alpha Resolution Testing	30%	60 d	1/6/04	3/31/04														
453	Life Test HET Detectors	30%	60 d	1/6/04	3/31/04														
454	<b>Electronics Board</b>	<b>9%</b>	<b>80 d</b>	<b>1/22/04</b>	<b>5/13/04</b>														
455	<b>Assembly</b>	<b>50%</b>	<b>36 d</b>	<b>1/22/04</b>	<b>3/12/04</b>														
456	Install Socket on HET Electronics FM 1 Board for ETU ACTEL	100%	1 d	1/22/04	1/22/04														
457	Complete Population of HET Electronics FM 1 Board (ETU ACTEL)	100%	1 d	1/23/04	1/23/04														
458	Complete Population of HET Electronics FM 2 Board (Flight ACTE)	0%	2 d	3/11/04	3/12/04														
459	<b>Test</b>	<b>6%</b>	<b>78 d</b>	<b>1/26/04</b>	<b>5/13/04</b>														
460	<b>FM 1</b>	<b>13%</b>	<b>40 d</b>	<b>1/26/04</b>	<b>3/22/04</b>														
461	Test HET FM 1 Electronics Board w/ETU ACTEL	25%	20 d	1/26/04	2/23/04														
462	Remove ETU ACTEL and socket from HET FM 1 Electronics	0%	1 d	2/24/04	2/24/04														
463	Install Flight ACTEL on HET FM 1 Electronics Board	0%	1 d	2/25/04	2/25/04														
464	Retest HET FM 1 Electronics Board w/Flight ACTEL	0%	10 d	2/26/04	3/10/04														
465	Conformal Coat HET FM 1 Electronics Board	0%	2 d	3/11/04	3/12/04														
466	Retest Conformal Coated HET FM 1 Electronics Board	0%	2 d	3/15/04	3/16/04														
467	Bakeout HET FM 1 Electronics Board	0%	2 d	3/17/04	3/18/04														
468	Retest Bakedout HET FM 1 Electronics Board	0%	2 d	3/19/04	3/22/04														
469	<b>FM 2</b>	<b>0%</b>	<b>38 d</b>	<b>3/23/04</b>	<b>5/13/04</b>														
470	Test HET FM 2 Electronics Board	0%	30 d	3/23/04	5/3/04														
471	Conformal Coat HET FM 2 Electronics Board	0%	2 d	5/4/04	5/5/04														
472	Retest Conformal Coated HET FM 2 Electronics Board	0%	2 d	5/6/04	5/7/04														
473	Bakeout HET FM 2 Electronics Board	0%	2 d	5/10/04	5/11/04														
474	Retest Bakedout HET FM 2 Electronics Board	0%	2 d	5/12/04	5/13/04														
475	<b>Flight Software</b>	<b>10%</b>	<b>70 d</b>	<b>1/22/04</b>	<b>4/29/04</b>														
476	<b>Design</b>	<b>70%</b>	<b>10 d</b>	<b>1/22/04</b>	<b>2/4/04</b>														
477	Complete Definition of HET PH Event Processing	70%	10 d	1/22/04	2/4/04														
478	<b>Coding</b>	<b>0%</b>	<b>20 d</b>	<b>2/5/04</b>	<b>3/4/04</b>														
479	Code HET PH Event Processing Update for Flight	0%	10 d	2/5/04	2/19/04														
480	Code HET Telemetry Formatting Update for Flight	0%	10 d	2/20/04	3/4/04														

ID	Task Name	% Comp	Dur	Start	Finish	2003				2004				2005				200	
						Qtr 4	Qtr 1	Qtr 2	Qtr 3	Qtr 4	Qtr 1	Qtr 2	Qtr 3	Qtr 4	Qtr 1	Qtr 2	Qtr 3	Qtr 4	Qtr 1
481	<b>Test</b>	0%	40 d	3/5/04	4/29/04														
482	Test Integrated HET S/W with Simulated Data	0%	15 d	3/5/04	3/25/04														
483	Verify HET On-Board Software	0%	25 d	3/26/04	4/29/04														
484	<b>Integration &amp; Test</b>	0%	35 d	5/3/04	6/21/04														
485	<b>FM 1</b>	0%	20 d	5/3/04	5/28/04														
486	Integrate HET FM 1 Electronics Telescope (Ahead)	0%	5 d	5/3/04	5/7/04														
487	Test HET FM 1 Telescope (Ahead)	0%	15 d	5/10/04	5/28/04														
488	<b>FM 2</b>	0%	26 d	5/14/04	6/21/04														
489	Integrate HET FM 2 Electronics Telescope (Behind)	0%	5 d	5/14/04	5/20/04														
490	Test HET FM 2 Telescope (Behind)	0%	15 d	6/1/04	6/21/04														
491	<b>LET - CIT</b>	66%	228 d	7/14/03	6/8/04														
492	<b>Deliveries</b>	0%	24 d	5/4/04	6/8/04														
493	Deliver LET FM 1 (stays at CIT for SEP I&T)	0%	0 d	6/8/04	6/8/04														
494	Deliver LET FM 2 (stays at CIT for SEP I&T)	0%	0 d	6/8/04	6/8/04														
495	Deliver LET Flight Software Build 3	0%	0 d	5/4/04	5/4/04														
496	<b>Detectors</b>	83%	167 d	7/14/03	3/12/04														
497	Complete LET Flight Detector Testing	83%	167 d	7/14/03	3/12/04														
498	<b>Hybrids</b>	86%	144 d	8/1/03	3/1/04														
499	Complete Test of Flight Hybrids (LET and to GSFC for HET FM 2)	86%	144 d	8/1/03	3/1/04														
500	<b>Detector/Misc Board</b>	0%	21 d	3/2/04	3/30/04														
501	<b>Assembly</b>	0%	10 d	3/2/04	3/15/04														
502	Assemble LET FM 1 Detector Board	0%	10 d	3/2/04	3/15/04														
503	Assemble LET FM 2 Detector Board	0%	10 d	3/2/04	3/15/04														
504	<b>Test</b>	0%	11 d	3/16/04	3/30/04														
505	Test LET FM 1 Detector Board	0%	11 d	3/16/04	3/30/04														
506	Test LET FM 2 Detector Board	0%	11 d	3/16/04	3/30/04														
507	<b>Flight Software</b>	65%	190 d	8/1/03	5/4/04														
508	Let Flight Software Build 3	65%	190 d	8/1/03	5/4/04														
509	<b>Integration &amp; Test</b>	0%	20 d	5/11/04	6/8/04														
510	<b>FM 1</b>	0%	20 d	5/11/04	6/8/04														
511	Integrate LET FM 1 Housing With Detectors	0%	20 d	5/11/04	6/8/04														
512	<b>FM 2</b>	0%	20 d	5/11/04	6/8/04														
513	Integrate LET FM 2 Housing With Detectors	0%	20 d	5/11/04	6/8/04														
514	<b>SEPT - Kiel/ESTEC</b>	71%	245 d	8/8/03	7/28/04														
515	<b>Deliveries</b>	0%	99 d	3/11/04	7/28/04														
516	Deliver SEPT-NS FM 1 to CIT for SEP I&T and Suite EMC	0%	5 d	3/11/04	3/17/04														
517	Deliver SEPT-E FM 1 to CIT for SEP I&T and Suite EMC	0%	5 d	3/11/04	3/17/04														
518	Final Delivery of SEPT FM 1 to APL (after Therm Bal @ GSFC)	0%	2 d	7/27/04	7/28/04														
519	Deliver SEPT-NS FM 2 to CIT for SEP I&T and Suite EMC	0%	5 d	3/22/04	3/26/04														
520	Deliver SEPT-E FM 2 to CIT for SEP I&T and Suite EMC	0%	5 d	3/22/04	3/26/04														

ID	Task Name	% Comp	Dur	Start	Finish	2003				2004				2005				200	
						Qtr 4	Qtr 1	Qtr 2	Qtr 3	Qtr 4	Qtr 1	Qtr 2	Qtr 3	Qtr 4	Qtr 1	Qtr 2	Qtr 3	Qtr 4	Qtr 1
521	<b>Mechanical Assembly</b>	77%	46 d	12/22/03	2/27/04														
522	<b>FM 1</b>	100%	13 d	12/22/03	1/9/04														
523	Assemble SEPT-NS FM 1 Sensor and E-Box Housing	100%	13 d	12/22/03	1/9/04														
524	Assemble SEPT-E FM 1 Sensor and E-Box Housing	100%	13 d	12/22/03	1/9/04														
525	<b>FM 2</b>	100%	14 d	12/29/03	1/16/04														
526	Assemble SEPT-NS FM 2 Sensor and E-Box Housing	100%	14 d	12/29/03	1/16/04														
527	Assemble SEPT-E FM 2 Sensor and E-Box Housing	100%	14 d	12/29/03	1/16/04														
528	<b>Spare</b>	32%	28 d	1/20/04	2/27/04														
529	Assemble SEPT Spare Sensor and E-Box Housing	32%	28 d	1/20/04	2/27/04														
530	<b>Electronics</b>	84%	198 d	8/8/03	5/21/04														
531	<b>Assembly</b>	86%	172 d	8/8/03	4/15/04														
532	<b>FM 2</b>	100%	106 d	8/8/03	1/12/04														
533	Assemble SEPT-NS FM 2 Electronics	100%	106 d	8/8/03	1/12/04														
534	Assemble SEPT-E FM 2 Electronics	100%	92 d	8/8/03	12/19/03														
535	<b>Spare</b>	69%	172 d	8/8/03	4/15/04														
536	Assemble SEPT FS Electronics	69%	172 d	8/8/03	4/15/04														
537	<b>Test</b>	70%	113 d	12/11/03	5/21/04														
538	<b>FM 2</b>	100%	34 d	12/11/03	1/30/04														
539	SEPT-NS FM 2 Electronics Test	100%	4 d	1/13/04	1/16/04														
540	SEPT-E FM 2 Electronics Test	100%	4 d	12/11/03	12/16/03														
541	Coat SEPT-NS FM 2 Electronics Board	100%	4 d	1/20/04	1/23/04														
542	Coat SEPT-E FM 2 Electronics Board	100%	5 d	12/17/03	12/23/03														
543	SEPT-NS FM 2 Mechanical Integration	100%	5 d	1/26/04	1/30/04														
544	SEPT-E FM 2 Mechanical Integration	100%	13 d	12/24/03	1/13/04														
545	<b>Spare</b>	0%	20 d	4/26/04	5/21/04														
546	SEPT Flight Spare Electronics Test	0%	5 d	4/26/04	4/30/04														
547	Coat SEPT FS Electronics Board	0%	5 d	5/10/04	5/14/04														
548	SEPT FS Mechanical Integration	0%	5 d	5/17/04	5/21/04														
549	<b>Integration &amp; Test</b>	35%	138 d	1/12/04	7/26/04														
550	<b>FM 1</b>	29%	138 d	1/12/04	7/26/04														
551	<b>SEPT-NS</b>	29%	129 d	1/26/04	7/26/04														
552	SEPT-NS FM 1 Integration & Test	100%	5 d	1/26/04	1/30/04														
553	Muon and Radioactive Source Test	100%	5 d	2/2/04	2/6/04														
554	SEPT-NS FM 1 Vibration	0%	4 d	2/17/04	2/20/04														
555	SEPT-NS FM 1 Thermal Vac	0%	9 d	2/25/04	3/8/04														
556	SEPT-NS FM 1 Bake Out	0%	2 d	3/9/04	3/10/04														
557	SEPT-NS FM 1 Thermal Balance (at GSFC after Suite EMC)	0%	10 d	7/13/04	7/26/04														
558	<b>SEPT-E</b>	29%	138 d	1/12/04	7/26/04														
559	SEPT-E FM 1 Integration & Test	100%	5 d	1/12/04	1/16/04														
560	Muon and Radioactive Source Test	100%	5 d	1/29/04	2/4/04														

ID	Task Name	% Comp	Dur	Start	Finish	2003				2004				2005				200	
						Qtr 4	Qtr 1	Qtr 2	Qtr 3	Qtr 4	Qtr 1	Qtr 2	Qtr 3	Qtr 4	Qtr 1	Qtr 2	Qtr 3	Qtr 4	Qtr 1
561	SEPT-E FM 1 Vibration	0%	4 d	2/21/04	2/24/04														
562	SEPT-E FM 1 Thermal Vac	0%	9 d	2/25/04	3/8/04														
563	SEPT-E FM 1 Bake Out	0%	2 d	3/9/04	3/10/04														
564	SEPT-E FM 1 Thermal Balance (at GSFC after Suite EMC)	0%	10 d	7/13/04	7/26/04														
565	<b>FM 2</b>	<b>44%</b>	<b>48 d</b>	<b>1/12/04</b>	<b>3/19/04</b>														
566	<b>SEPT-NS</b>	<b>48%</b>	<b>43 d</b>	<b>1/20/04</b>	<b>3/19/04</b>														
567	SEPT-NS FM 2 Integration & Test	100%	8 d	1/20/04	1/29/04														
568	Muon and Radioactive Source Test	100%	6 d	1/30/04	2/6/04														
569	SEPT-NS FM 2 Vibration	0%	4 d	2/17/04	2/20/04														
570	SEPT-NS FM 2 Thermal Vac	0%	9 d	3/9/04	3/17/04														
571	SEPT-NS FM 2 Bake Out	0%	2 d	3/18/04	3/19/04														
572	<b>SEPT-E</b>	<b>40%</b>	<b>48 d</b>	<b>1/12/04</b>	<b>3/19/04</b>														
573	SEPT-E FM 2 Integration & Test	100%	5 d	1/12/04	1/16/04														
574	Muon and Radioactive Source Test	100%	5 d	1/29/04	2/4/04														
575	SEPT-E FM 2 Vibration	0%	4 d	2/21/04	2/24/04														
576	SEPT-E FM 2 Thermal Vac	0%	9 d	3/9/04	3/17/04														
577	SEPT-E FM 2 Bake Out	0%	2 d	3/18/04	3/19/04														
578	<b>SIT - UMD</b>	<b>42%</b>	<b>351 d</b>	<b>6/2/03</b>	<b>10/20/04</b>														
579	<b>Deliveries</b>	<b>0%</b>	<b>81 d</b>	<b>6/18/04</b>	<b>10/12/04</b>														
580	Deliver SIT FM 1 to CIT for SEP I&T and Suite EMC	0%	2 d	6/18/04	6/21/04														
581	Deliver SIT FM 1 back to GSFC for Environmental Testing (after EMC 1	0%	2 d	7/13/04	7/14/04														
582	Final Delivery of SIT FM 1 to APL	0%	1 d	9/1/04	9/1/04														
583	Deliver SIT FM 2 to CIT for SEP I&T	0%	2 d	7/23/04	7/26/04														
584	Deliver SIT FM 2 back to GSFC for Environmental Testing	0%	2 d	8/19/04	8/20/04														
585	Final Delivery of SIT FM 2 to APL	0%	1 d	10/12/04	10/12/04														
586	<b>Detectors</b>	<b>50%</b>	<b>60 d</b>	<b>1/5/04</b>	<b>3/30/04</b>														
587	<b>Detector Testing</b>	<b>50%</b>	<b>60 d</b>	<b>1/5/04</b>	<b>3/30/04</b>														
588	<b>FM 1</b>	<b>50%</b>	<b>60 d</b>	<b>1/5/04</b>	<b>3/30/04</b>														
589	Test FM 1 Solid States Detectors	58%	33 d	1/5/04	2/20/04														
590	Test FM 1 Foils	58%	33 d	1/5/04	2/20/04														
591	Alpha Tests FM 1 w/Proto Elect	0%	10 d	3/17/04	3/30/04														
592	<b>FM 2</b>	<b>50%</b>	<b>60 d</b>	<b>1/5/04</b>	<b>3/30/04</b>														
593	Test FM 2 Solid States Detectors	58%	33 d	1/5/04	2/20/04														
594	Test FM 2 Foils	58%	33 d	1/5/04	2/20/04														
595	Alpha Tests FM 2 w/Proto Elect	0%	10 d	3/17/04	3/30/04														
596	<b>ACTEL - for SIT Logic Board</b>	<b>0%</b>	<b>11 d</b>	<b>2/27/04</b>	<b>3/12/04</b>														
597	Burn Final SIT ACTEL Chip (at GSFC)	0%	1 d	2/27/04	2/27/04														
598	Evaluate (Test) SIT Final ACTEL Chip	0%	10 d	3/1/04	3/12/04														
599	<b>TOF Boards</b>	<b>0%</b>	<b>20 d</b>	<b>2/12/04</b>	<b>3/11/04</b>														
600	Receive Analog and Digital TOF Boards (FM 1 & FM 2)	100%	0 d	2/12/04	2/12/04														



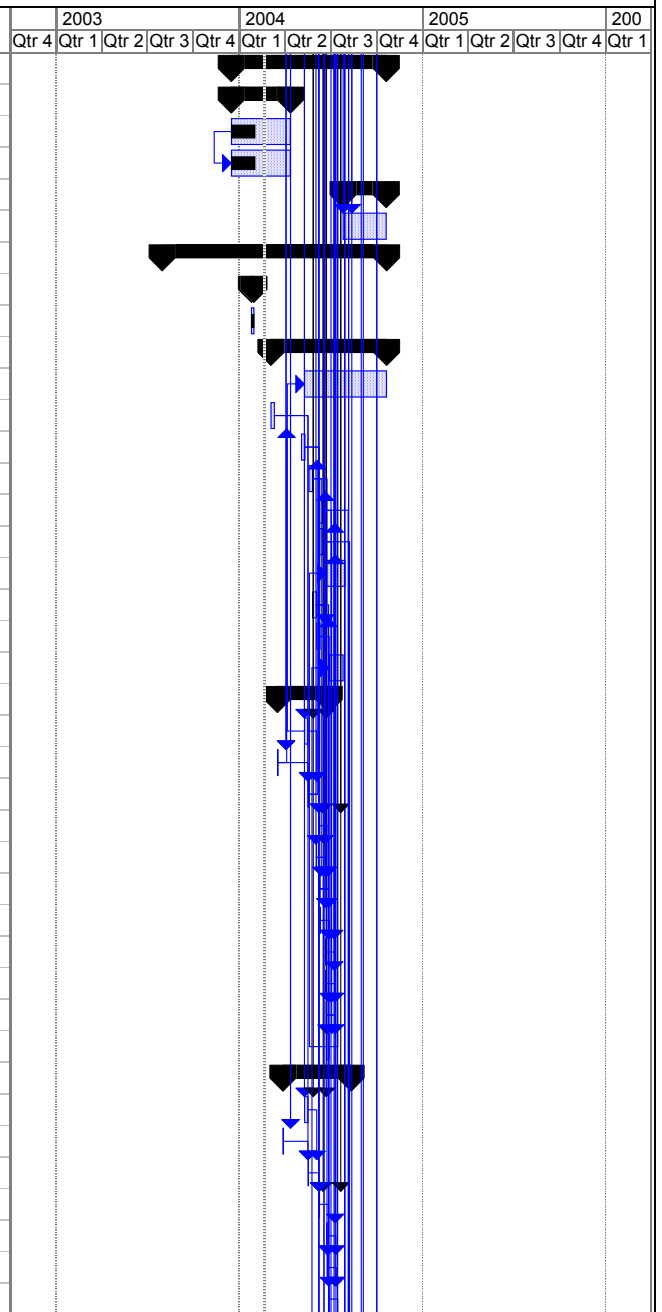
ID	Task Name	% Comp	Dur	Start	Finish	2003				2004				2005				200	
						Qtr 4	Qtr 1	Qtr 2	Qtr 3	Qtr 4	Qtr 1	Qtr 2	Qtr 3	Qtr 4	Qtr 1	Qtr 2	Qtr 3	Qtr 4	Qtr 1
601	<b>Test</b>	0%	20 d	2/12/04	3/11/04														
602	<b>FM 1</b>	0%	10 d	2/12/04	2/26/04														
603	FM 1 TOF Boards Functional Test	0%	10 d	2/12/04	2/26/04														
604	<b>FM 2</b>	0%	10 d	2/27/04	3/11/04														
605	FM 2 TOF Boards Functional Test	0%	10 d	2/27/04	3/11/04														
606	<b>Energy Board</b>	65%	99 d	11/10/03	4/2/04														
607	<b>Assembly</b>	80%	69 d	11/10/03	2/20/04														
608	<b>FM 1</b>	80%	69 d	11/10/03	2/20/04														
609	Assemble FM 1 Energy Board	80%	69 d	11/10/03	2/20/04														
610	<b>FM 2</b>	80%	69 d	11/10/03	2/20/04														
611	Assemble FM 2 Energy Board	80%	69 d	11/10/03	2/20/04														
612	<b>Test</b>	0%	30 d	2/23/04	4/2/04														
613	<b>FM 1</b>	0%	15 d	2/23/04	3/12/04														
614	Bench Test/Calibration	0%	10 d	2/23/04	3/5/04														
615	Thermal	0%	3 d	3/8/04	3/10/04														
616	Voltage Margin	0%	2 d	3/11/04	3/12/04														
617	<b>FM 2</b>	0%	15 d	3/15/04	4/2/04														
618	FM 2 Energy Board Functional Test	0%	15 d	3/15/04	4/2/04														
619	<b>Logic Board</b>	39%	168 d	11/10/03	7/9/04														
620	<b>Design</b>	100%	3 d	11/17/03	11/19/03														
621	Layout new Logic Board Design	100%	3 d	11/17/03	11/19/03														
622	<b>Fabrication</b>	0%	10 d	2/9/04	2/23/04														
623	FM 1 & FM 2 Logic Board Fabrication	0%	10 d	2/9/04	2/23/04														
624	<b>Assembly</b>	0%	86 d	3/9/04	7/7/04														
625	<b>FM 1</b>	0%	58 d	3/9/04	5/27/04														
626	Assemble FM 1 Logic Board with ETU ACTELs	0%	11 d	3/9/04	3/23/04														
627	Disassemble FM 1 Logic Board with ETU ACTELs	0%	1 d	5/24/04	5/24/04														
628	Retrofit/Inspect FM 1 Flight ACTELs	0%	2 d	5/25/04	5/26/04														
629	Reassemble FM 1 Logic Board with Flight ACTELs	0%	1 d	5/27/04	5/27/04														
630	<b>FM 2</b>	0%	86 d	3/9/04	7/7/04														
631	Assemble FM 2 Logic Board with ETU ACTELs	0%	11 d	3/9/04	3/23/04														
632	Disassemble FM 2 Logic Boards	0%	1 d	7/2/04	7/2/04														
633	Retrofit/Inspect Flight ACTELs	0%	2 d	7/5/04	7/6/04														
634	Reassemble FM 2 Logic Boards	0%	1 d	7/7/04	7/7/04														
635	<b>Test</b>	53%	168 d	11/10/03	7/9/04														
636	<b>ETU</b>	92%	60 d	11/10/03	2/6/04														
637	Test New ETU Logic Board	92%	60 d	11/10/03	2/6/04														
638	<b>FM1 &amp; FM 2</b>	0%	10 d	2/24/04	3/8/04														
639	Coupon Testing	0%	10 d	2/24/04	3/8/04														
640	<b>FM 1</b>	0%	49 d	3/24/04	6/1/04														



ID	Task Name	% Comp	Dur	Start	Finish	2003				2004				2005				200	
						Qtr 4	Qtr 1	Qtr 2	Qtr 3	Qtr 4	Qtr 1	Qtr 2	Qtr 3	Qtr 4	Qtr 1	Qtr 2	Qtr 3	Qtr 4	Qtr 1
641	Functional Test of FM 1 Logic Board w/ETU ACTELS	0%	15 d	3/24/04	4/13/04														
642	Funtional Test of FM 1 Logic Board w/Flight ACTELS	0%	2 d	5/28/04	6/1/04														
643	<b>FM 2</b>	<b>0%</b>	<b>62 d</b>	<b>4/14/04</b>	<b>7/9/04</b>														
644	Functional Test of FM 2 Logic Board w/ETU ACTELS	0%	15 d	4/14/04	5/4/04														
645	Functional Test of FM 2 Logic Board w/Flight ACTELS	0%	2 d	7/8/04	7/9/04														
646	<b>Mother Board</b>	<b>30%</b>	<b>65 d</b>	<b>12/22/03</b>	<b>3/25/04</b>														
647	<b>Design</b>	<b>90%</b>	<b>30 d</b>	<b>12/22/03</b>	<b>2/4/04</b>														
648	<b>FM 1 &amp; FM 2</b>	<b>90%</b>	<b>30 d</b>	<b>12/22/03</b>	<b>2/4/04</b>														
649	Finalize Mother Board Layout	90%	30 d	12/22/03	2/4/04														
650	<b>Fabrication</b>	<b>0%</b>	<b>15 d</b>	<b>2/5/04</b>	<b>2/26/04</b>														
651	<b>FM 1 &amp; FM 2</b>	<b>0%</b>	<b>15 d</b>	<b>2/5/04</b>	<b>2/26/04</b>														
652	Fabricate FM 1 & FM 2 Mother Boards	0%	15 d	2/5/04	2/26/04														
653	<b>Assembly</b>	<b>0%</b>	<b>10 d</b>	<b>2/27/04</b>	<b>3/11/04</b>														
654	Assemble FM 1 Mother Board	0%	10 d	2/27/04	3/11/04														
655	Assemble FM 2 Mother Board	0%	10 d	2/27/04	3/11/04														
656	<b>Test</b>	<b>0%</b>	<b>20 d</b>	<b>2/27/04</b>	<b>3/25/04</b>														
657	<b>FM 1 &amp; FM 2</b>	<b>0%</b>	<b>15 d</b>	<b>2/27/04</b>	<b>3/18/04</b>														
658	Coupon Testing of Mother Boards	0%	15 d	2/27/04	3/18/04														
659	<b>FM 1</b>	<b>0%</b>	<b>5 d</b>	<b>3/12/04</b>	<b>3/18/04</b>														
660	Functional Test FM 1 Mother Board	0%	5 d	3/12/04	3/18/04														
661	<b>FM 2</b>	<b>0%</b>	<b>5 d</b>	<b>3/19/04</b>	<b>3/25/04</b>														
662	Functional Test FM 2 Mother Board	0%	5 d	3/19/04	3/25/04														
663	<b>HVPS</b>	<b>47%</b>	<b>75 d</b>	<b>1/12/04</b>	<b>4/27/04</b>														
664	<b>Test</b>	<b>47%</b>	<b>75 d</b>	<b>1/12/04</b>	<b>4/27/04</b>														
665	<b>FM 1</b>	<b>70%</b>	<b>20 d</b>	<b>1/12/04</b>	<b>2/9/04</b>														
666	Functional Test SIT FM 1 HVPS	70%	20 d	1/12/04	2/9/04														
667	<b>FM 2</b>	<b>0%</b>	<b>10 d</b>	<b>4/14/04</b>	<b>4/27/04</b>														
668	Functional Test SIT FM 2 HVPS	0%	10 d	4/14/04	4/27/04														
669	<b>Flight Software</b>	<b>80%</b>	<b>210 d</b>	<b>6/2/03</b>	<b>4/1/04</b>														
670	<b>Test</b>	<b>80%</b>	<b>210 d</b>	<b>6/2/03</b>	<b>4/1/04</b>														
671	<b>FM 1 &amp; FM 2</b>	<b>80%</b>	<b>210 d</b>	<b>6/2/03</b>	<b>4/1/04</b>														
672	Validate SIT On-Board Code	80%	210 d	6/2/03	4/1/04														
673	<b>Integration &amp; Test (using ETU Telescope for FM 1)</b>	<b>0%</b>	<b>81 d</b>	<b>3/31/04</b>	<b>7/22/04</b>														
674	<b>FM 1 (Flight Telescope)</b>	<b>0%</b>	<b>12 d</b>	<b>6/2/04</b>	<b>6/17/04</b>														
675	Disassemble SIT FM 1	0%	1 d	6/2/04	6/2/04														
676	Conformal Coat SIT FM 1 Boards	0%	2 d	6/3/04	6/4/04														
677	Reassemble SIT FM 1 with Flight Telescope	0%	1 d	6/7/04	6/7/04														
678	Bench Calibration SIT FM 1 w/Flight Telescope	0%	3 d	6/8/04	6/10/04														
679	Vacuum Test SIT FM 1 w/Flight Telescope	0%	5 d	6/11/04	6/17/04														
680	<b>FM 2</b>	<b>0%</b>	<b>9 d</b>	<b>7/12/04</b>	<b>7/22/04</b>														

ID	Task Name	% Comp	Dur	Start	Finish	2003				2004				2005				200	
						Qtr 4	Qtr 1	Qtr 2	Qtr 3	Qtr 4	Qtr 1	Qtr 2	Qtr 3	Qtr 4	Qtr 1	Qtr 2	Qtr 3	Qtr 4	Qtr 1
681	Disassemble SIT FM 2	0%	1 d	7/12/04	7/12/04														
682	Conformal Coat SIT FM 2 Boards	0%	2 d	7/13/04	7/14/04														
683	Reassemble SIT FM 2	0%	1 d	7/15/04	7/15/04														
684	Post-Coat Retest SIT FM 2	0%	5 d	7/16/04	7/22/04														
685	<b>FM 1 (ETU Telescope)</b>	<b>0%</b>	<b>38 d</b>	<b>3/31/04</b>	<b>5/21/04</b>														
686	Integrate SIT FM 1 HVPS and SIT ETU Telescope Without Electr	0%	3 d	3/31/04	4/2/04														
687	Integrate Electronics to SIT ETU Telescope	0%	2 d	4/14/04	4/15/04														
688	SIT FM 1 Debug	0%	5 d	4/16/04	4/22/04														
689	SIT FM 1 Bench Test	0%	5 d	4/23/04	4/29/04														
690	SIT FM 1 Alpha TEST	0%	5 d	4/30/04	5/6/04														
691	SIT FM 1 Noise Removal	0%	5 d	5/7/04	5/13/04														
692	SIT FM 1 Thermal Test	0%	5 d	5/14/04	5/20/04														
693	SIT FM 1 Functional Test	0%	1 d	5/21/04	5/21/04														
694	<b>FM 2</b>	<b>0%</b>	<b>31 d</b>	<b>5/19/04</b>	<b>7/1/04</b>														
695	Integrate SIT FM 2 HVPS and SIT FM 2 Telescope Without Electr	0%	3 d	5/19/04	5/21/04														
696	Integrate Electronics to SIT FM 2 Telescope	0%	2 d	5/24/04	5/25/04														
697	SIT FM 2 Debug	0%	5 d	5/26/04	6/2/04														
698	SIT FM 2 Bench Test	0%	5 d	6/3/04	6/9/04														
699	SIT FM 2 Alpha Test	0%	5 d	6/10/04	6/16/04														
700	SIT FM 2 Noise Removal	0%	5 d	6/17/04	6/23/04														
701	SIT FM 2 Thermal Test	0%	5 d	6/24/04	6/30/04														
702	SIT FM 2 Functional Test	0%	1 d	7/1/04	7/1/04														
703	<b>Environmental Testing at GSFC (FM 1)</b>	<b>0%</b>	<b>34 d</b>	<b>7/15/04</b>	<b>8/31/04</b>														
704	SIT FM 1 Vibration and Acoustics	0%	10 d	7/15/04	7/28/04														
705	Functional Test	0%	1 d	7/29/04	7/29/04														
706	SIT FM 1 Thermal Balance	0%	5 d	7/30/04	8/5/04														
707	SIT FM 1 Thermal Vac	0%	10 d	8/6/04	8/19/04														
708	Disassemble SIT Instruments	0%	2 d	8/20/04	8/23/04														
709	Bake Out	0%	3 d	8/24/04	8/26/04														
710	Reassemble Instruments	0%	2 d	8/27/04	8/30/04														
711	Functional Test	0%	1 d	8/31/04	8/31/04														
712	<b>Environmental Testing at GSFC (FM 2)</b>	<b>0%</b>	<b>34 d</b>	<b>8/23/04</b>	<b>10/8/04</b>														
713	SIT FM 2 Vibration and Acoustics	0%	10 d	8/23/04	9/3/04														
714	Functional Test	0%	1 d	9/7/04	9/7/04														
715	SIT FM 2 Thermal Balance	0%	5 d	9/8/04	9/14/04														
716	SIT FM 2 Thermal Vac	0%	10 d	9/15/04	9/28/04														
717	Disassemble SIT Instruments	0%	2 d	9/29/04	9/30/04														
718	Bake Out	0%	3 d	10/1/04	10/5/04														
719	Reassemble Instruments	0%	2 d	10/6/04	10/7/04														
720	Functional Test	0%	1 d	10/8/04	10/8/04														

ID	Task Name	% Comp	Dur	Start	Finish	2003				2004				2005				200	
						Qtr 4	Qtr 1	Qtr 2	Qtr 3	Qtr 4	Qtr 1	Qtr 2	Qtr 3	Qtr 4	Qtr 1	Qtr 2	Qtr 3	Qtr 4	Qtr 1
721	<b>Emulators/Simulators/GSE</b>	<b>27%</b>	<b>214 d</b>	<b>12/17/03</b>	<b>10/20/04</b>														
722	<b>Simulators</b>	<b>38%</b>	<b>80 d</b>	<b>12/17/03</b>	<b>4/12/04</b>														
723	Labview CPU Ready	38%	80 d	12/17/03	4/12/04														
724	Test Simulator	38%	80 d	12/17/03	4/12/04														
725	<b>GSE</b>	<b>0%</b>	<b>60 d</b>	<b>7/27/04</b>	<b>10/20/04</b>														
726	Pulse Generator	0%	60 d	7/27/04	10/20/04														
727	<b>SEP Suite I&amp;T - CIT</b>	<b>32%</b>	<b>309 d</b>	<b>8/1/03</b>	<b>10/21/04</b>														
728	<b>ETU</b>	<b>100%</b>	<b>5 d</b>	<b>1/26/04</b>	<b>1/30/04</b>														
729	Complete Integration/Test of SEP Central EM with Sensors	100%	5 d	1/26/04	1/30/04														
730	<b>FM 1 &amp; FM 2</b>	<b>0%</b>	<b>162 d</b>	<b>3/5/04</b>	<b>10/21/04</b>														
731	Software Support For SEP Integration	0%	115 d	5/11/04	10/21/04														
732	Generate SEPT integration & test procedure	0%	5 d	3/5/04	3/11/04														
733	Generate LET integration & test procedure	0%	5 d	5/5/04	5/11/04														
734	Generate HET integration & test procedure	0%	5 d	5/20/04	5/26/04														
735	Generate SIT integration & test procedure	0%	5 d	6/9/04	6/15/04														
736	Generate SEP system test procedure	0%	5 d	6/10/04	6/16/04														
737	Software Support For Acceptance Testing of SEP Instruments	0%	27 d	6/24/04	7/30/04														
738	Generate SEP-IDPU integration procedure	0%	5 d	5/27/04	6/3/04														
739	Generate SEP-IDPU test procedure	0%	5 d	6/4/04	6/10/04														
740	Software Support of SEP Accelerator Tests	0%	20 d	6/29/04	7/26/04														
741	<b>FM 1</b>	<b>0%</b>	<b>72 d</b>	<b>3/18/04</b>	<b>6/28/04</b>														
742	Integrate/test SEP Central FM 1	0%	5 d	5/11/04	5/17/04														
743	Receive & inspect SEPT FM 1	0%	1 d	3/18/04	3/18/04														
744	Integrate & test SEPT FM 1	0%	1 d	5/18/04	5/18/04														
745	Integrate & test LET FM 1	0%	1 d	6/9/04	6/9/04														
746	Receive & inspect HET FM 1	0%	1 d	6/3/04	6/3/04														
747	Integrate & test HET FM 1	0%	1 d	6/10/04	6/10/04														
748	Integrate SEP FM 1 - IDPU FM 1	0%	1 d	6/11/04	6/11/04														
749	Test SEP FM 1 - IDPU FM 1	0%	1 d	6/22/04	6/22/04														
750	Receive & inspect SIT FM 1	0%	1 d	6/22/04	6/22/04														
751	Integrate & test SIT FM 1	0%	1 d	6/23/04	6/23/04														
752	SEP system test FM 1	0%	3 d	6/24/04	6/28/04														
753	<b>FM 2</b>	<b>0%</b>	<b>97 d</b>	<b>3/29/04</b>	<b>8/11/04</b>														
754	Integrate/test SEP Central FM 2	0%	5 d	5/11/04	5/17/04														
755	Receive & inspect SEPT FM 2	0%	1 d	3/29/04	3/29/04														
756	Integrate & test SEPT FM 2	0%	1 d	5/18/04	5/18/04														
757	Integrate & test LET FM 2	0%	1 d	6/9/04	6/9/04														
758	Receive & inspect HET FM 2	0%	1 d	6/24/04	6/24/04														
759	Integrate & test HET FM 2	0%	1 d	6/25/04	6/25/04														
760	Integrate SEP FM 2 - IDPU FM 2	0%	1 d	6/28/04	6/28/04														



ID	Task Name	% Comp	Dur	Start	Finish	2003				2004				2005				200
						Qtr 4	Qtr 1	Qtr 2	Qtr 3	Qtr 4	Qtr 1	Qtr 2	Qtr 3	Qtr 4	Qtr 1	Qtr 2	Qtr 3	Qtr 4
761	Test SEP FM 2 - IDPU FM 2	0%	1 d	6/29/04	6/29/04													
762	Receive & inspect SIT FM 2	0%	1 d	7/27/04	7/27/04													
763	Integrate & test SIT FM 2	0%	1 d	8/6/04	8/6/04													
764	SEP FM 2 system test	0%	3 d	8/9/04	8/11/04													
765	<b>Environmental Test (at JPL)</b>	<b>0%</b>	<b>93 d</b>	<b>5/17/04</b>	<b>9/24/04</b>													
766	Generate Environmental Test Procedures	0%	15 d	5/17/04	6/7/04													
767	Manufacture test cables (JPL)	0%	20 d	6/1/04	6/28/04													
768	<b>FM 1</b>	<b>0%</b>	<b>45 d</b>	<b>7/23/04</b>	<b>9/24/04</b>													
769	FM 1 LET/HET/SEP Central Vibration/Acoustics Test	0%	10 d	7/23/04	8/5/04													
770	FM 1 LET/HET/SEP Central Thermal Balance Test	0%	5 d	8/6/04	8/12/04													
771	FM 1 LET/HET/SEP Central TV Test	0%	15 d	8/19/04	9/9/04													
772	Evaluate SEP performance	0%	10 d	9/10/04	9/23/04													
773	Generate test reports	0%	11 d	9/10/04	9/24/04													
774	Bakeout Clean SEP exterior & prepare for delivery	0%	3 d	9/10/04	9/14/04													
775	<b>FM 2</b>	<b>0%</b>	<b>45 d</b>	<b>7/23/04</b>	<b>9/24/04</b>													
776	FM 2 EMI/EMC Test at CalTech	0%	5 d	8/12/04	8/18/04													
777	FM 2 LET/HET/SEP Central Vibration/Acoustics Test	0%	10 d	7/23/04	8/5/04													
778	FM 2 LET/HET/SEP Central TV Test	0%	15 d	8/19/04	9/9/04													
779	Evaluate SEP performance	0%	10 d	9/10/04	9/23/04													
780	Generate test reports	0%	11 d	9/10/04	9/24/04													
781	Bakeout Clean SEP exterior & prepare for delivery	0%	3 d	9/10/04	9/14/04													
782	<b>Accelerator Test (at MSU)</b>	<b>0%</b>	<b>5 d</b>	<b>7/13/04</b>	<b>7/19/04</b>													
783	FM 1 LET/SEP Cen end-to-end test at Accelerator	0%	5 d	7/13/04	7/19/04													
784	FM 2 LET/SEP Cen end-to-end test at Accelerator	0%	5 d	7/13/04	7/19/04													
785	<b>GSE</b>	<b>55%</b>	<b>305 d</b>	<b>8/1/03</b>	<b>10/15/04</b>													
786	<b>End-to-End Test Equipment</b>	<b>84%</b>	<b>218 d</b>	<b>8/11/03</b>	<b>6/22/04</b>													
787	Design	95%	192 d	8/11/03	5/14/04													
788	Assemble	0%	21 d	5/17/04	6/15/04													
789	Test	0%	5 d	6/16/04	6/22/04													
790	<b>GSE software</b>	<b>34%</b>	<b>305 d</b>	<b>8/1/03</b>	<b>10/15/04</b>													
791	Build GSE software release 2	66%	157 d	8/1/03	3/18/04													
792	Write user's guide	0%	8 d	3/22/04	3/31/04													
793	Build GSE software release 3	0%	117 d	5/3/04	10/15/04													
794	Write user's guide supplement	0%	22 d	9/15/04	10/15/04													
795	<b>SWEA and SIT Refurbishment (after S/C Environmental Testing)</b>	<b>0%</b>	<b>39 d</b>	<b>9/27/05</b>	<b>11/18/05</b>													
796	Ship SWEA FM 1 to UCB	0%	3 d	9/27/05	9/29/05													
797	Ship (Hand Carry) SIT FM 1 to UMD	0%	1 d	9/27/05	9/27/05													
798	Ship SWEA FM 2 to UCB	0%	3 d	10/4/05	10/6/05													
799	Ship (Hand Carry) SIT FM 2 to UMD	0%	1 d	10/4/05	10/4/05													
800	Vacuum Testing of SWEA FM 1 @ UCB	0%	5 d	9/30/05	10/6/05													

ID	Task Name	% Comp	Dur	Start	Finish	2003				2004				2005				200		
						Qtr 4	Qtr 1	Qtr 2	Qtr 3	Qtr 4	Qtr 1	Qtr 2	Qtr 3	Qtr 4	Qtr 1	Qtr 2	Qtr 3	Qtr 4	Qtr 1	
801	Vacuum Testing of SIT FM 1 @ UMD	0%	5 d	9/28/05	10/4/05															
802	Vacuum Testing of SWEA FM 2 @ UCB	0%	5 d	10/7/05	10/13/05															
803	Vacuum Testing of SIT FM 2 @ UMD	0%	5 d	10/5/05	10/11/05															
804	Ship SWEA FM 1 & 2 to Launch Site for Re-integration to S/C	0%	3 d	10/7/05	10/11/05															
805	Ship SIT FM 1 & 2 to Launch Site for Re-integration to S/C	0%	3 d	10/5/05	10/7/05															
806	Reintegration of SWEA and SIT to S/C (at Launch Site)	0%	3 d	10/12/05	10/14/05															
807	Target Date for Reintegration to S/C	0%	1 d	11/18/05	11/18/05															

