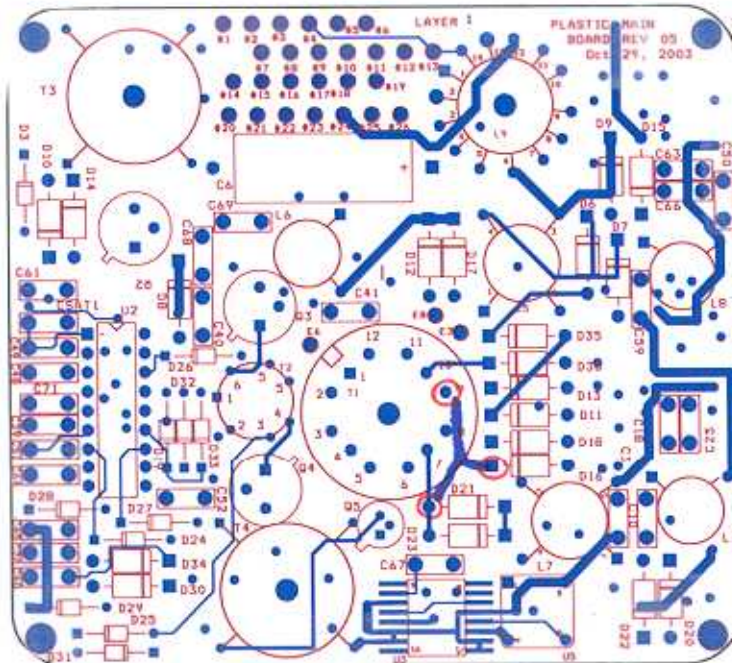
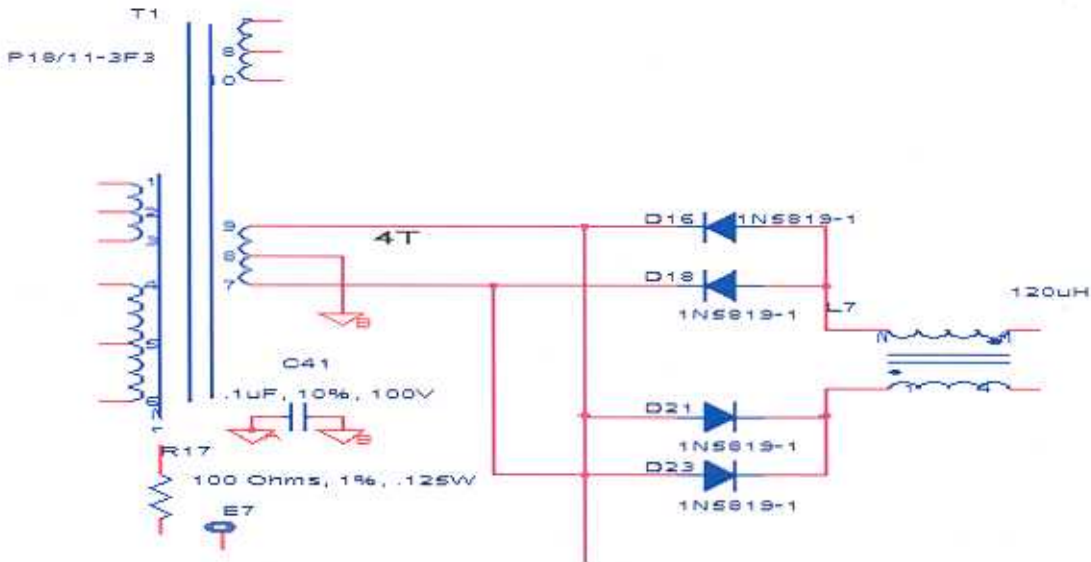


Requesting Engineer: Aida Shannu

Approved by: PCB 19 Feb 2004

**2. FIX SHORT BETWEEN T1 Pin 7 and Pin 9.**

- 1) Lift Pin 9 of T1.
- 2) Lift the Anode of D21
- 3) Lift the Cathode of D16
- 4) Use sleeves for the anode of D21 and the cathode of D16.
- 5) Connect all three nodes with #26 Teflon, Solid wire.
- 6) Jump D23 anode to the pad of D21 anode (Note that D21 anode should be lifted).



Approved by: Aida Shannu  
2004-2-19

Approved by: Ron Jackson 2-19-04

Requesting Engineer: Selda Heavon

Approved by: PCB 19 Feb 2004

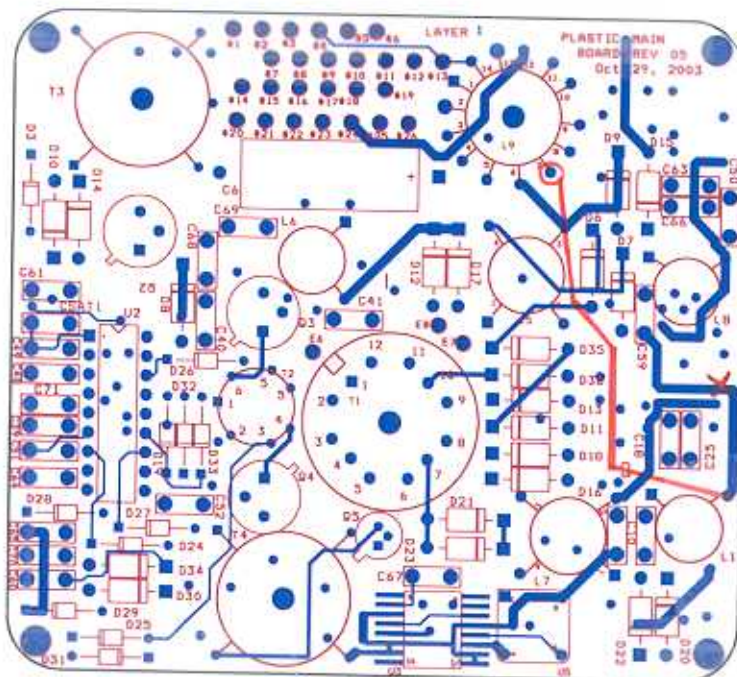
### STEREO IMPACT PLASTIC LVPS FM1 REWORK INSTRUCTIONS

**1. FIX SHORT BETWEEN L9 Pin 7 and Pin 1.**

- 1) Cut the trace between C59 and L1 Pin2.
- 2) Lift Pin 7 of L9
- 3) Connect L9 Pin 7 (lifted pin) to L1 Pin2

Layout View from Top:

o = Lift Pin    x = Cut trace



Approved by: [Signature]  
2004-2-19

Approved by: [Signature] 2-19-04

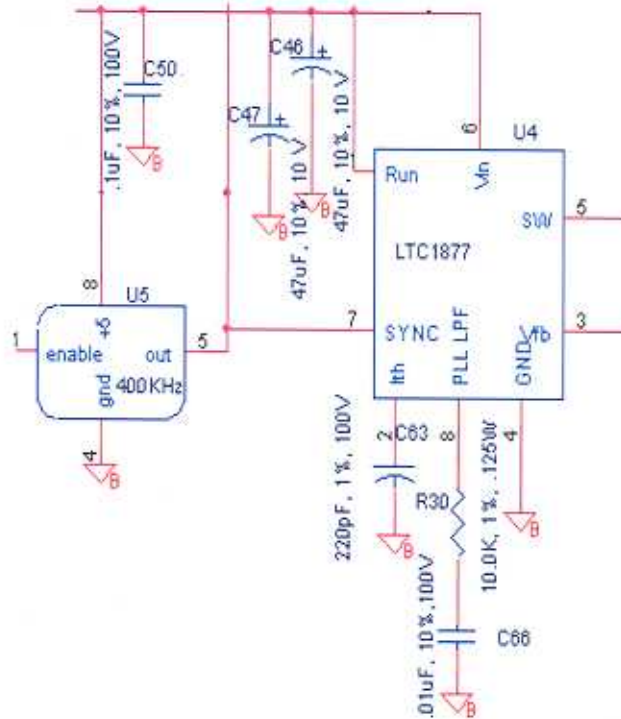
Requesting Engineer: Aida Hawnu

Approved by: PCB 19 Feb 2004

3. REPLACE CLOCK OSCILLATOR

5.5V was directly applied to the output of the oscillator. The oscillator is still functioning but to avoid any failure in the future it should be replaced.

- 1) Replace U5 (QT50AC6M).



Approved by: Aida Hawnu  
2004-2-19

Approved by: Ron Jackson 2-19-04